

TECHNICALLY Speaking

Place your order with CEDARLANE® or your local distributor.

Please contact CEDARLANE® for lot specific information.

Purified Anti-Mouse MAC-2 Monoclonal Antibody

Catalogue#	Format	Size	Concentration	Isotype Control
CL8942AP	Purified	100ug	1.0 mg/ml	CLCR2A00
CL8942B	Biotin	100ug	0.1 mg/ml	CLCR2A15
CL8942B-3	Biotin	300ug	0.1 mg/ml	CLCR2A15
CL8942F	FITC	100ug	0.1 mg/ml	CLCR2A01
CL8942F-3	FITC	300ug	0.1 mg/ml	CLCR2A01

Isotype: Rat IgG_{2a}

DESCRIPTION:

Cedarlane's anti-Mac-2 monoclonal antibody specifically binds the mouse Mac-2 antigen (also cross reacts with human). The antibody recognizes a 32,000 dalton surface antigen found on a subpopulation of mouse macrophages. It reacts with peritoneal exudate macrophages where the exudate is provoked by thioglycollate, protease peptone (20%), macrophages of lymphoid and non-lymphoid tissues, interdigitating dendritic cells and Langerhans cells. Mac-2 is also expressed in the cytoplasm on non-elicited resident macrophages; 5% are strongly reactive, the remaining 95% show much weaker staining.

The antibody does not react with peritoneal exudate macrophages where the exudate is provoked by *Listeria monocytogenes*, lipopolysaccharide or concanavalin A. It also does not react with peritoneal macrophages, splenic macrophages, granulocytes, thymocytes, peripheral lymph node cells and with 99% of bone marrow cells.

CL8942AP can be used for indirect immunofluorescence staining, including flow cytometric analysis of live cells. The addition of propidium iodide is optional; its use eliminates staining artifacts caused by dead cells (1). This antibody is also suitable for frozen sections (4,5); ELISA (6); and paraffin sections (7).

PRESENTATION:

Purified: Purified IgG buffered in PBS and 0.02% NaN₃. (Purified from ascitic fluid via Protein G Chromatography).

Biotin, FITC and PE: Biotin/FITC/PE conjugated IgG buffered in PBS, 0.02% NaN₃ and EIA grade BSA as a stabilizing protein to bring total protein concentration to 4-5 mg/mL.

No Azide: Purified Ig buffered in PBS, no preservative, 0.2µm sterile filtered.

Continued Overleaf...

For more information or to place an order please contact...

CEDARLANE®
LABORATORIES LIMITED



toll free: 1-800-268-5058
in North America

phone: (905) 878-8891 • fax: (905) 878-7800

5516 - 8th Line, R.R.#2, Hornby, Ontario, CANADA L0P 1E0

or visit our website for a list of our international distributors including contact information
website: www.cedarlanelabs.com • e-mail: info@cedarlanelabs.com

STORAGE/STABILITY:

For all formats, store at 4°C. DO NOT FREEZE PE conjugates. For long term storage (**Purified, Biotin, FITC, No Azide**), aliquot and freeze unused portion at -20°C in volumes appropriate for single usage. Avoid freeze/thaw cycles.

SPECIFICATIONS:

Clone: M3/38

Hybridoma Production:

Immunization: Immunogen: Plasma membrane glycoproteins from C57BL/6 mouse thioglycollate-elicited peritoneal exudate.
Donor: (Lewis x BN) F₁ rat spleen
Fusion Partner: NS-1

Specificity: Mouse MAC-2

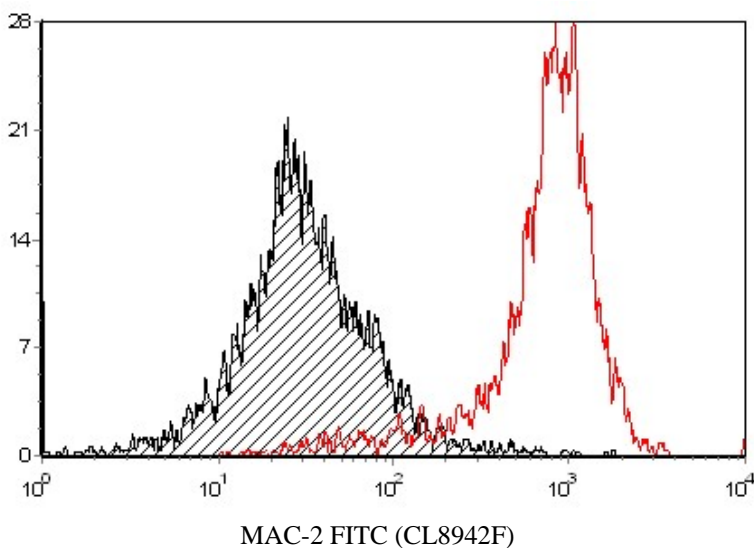
Isoytype: Rat IgG_{2a}

TEST RESULTS:

Tissue Distribution by Flow Cytometry Analysis:

Mouse Strain: BALB/c
Cell Concentration : 1x10⁶ cells per tests
Antibody Concentration Used: 0.5 µg/10⁶ cells
Isotypic Control: Purified Rat IgG_{2a} (CLCR2A00)

<u>Cell Source</u>	<u>Percentage of cells stained above control:</u>
Thymus	2.41%
Thioglycollate-elicited peritoneal exudate	85.8%



Cell Source: Thioglycollate-elicited peritoneal exudate (against isotypic control (shaded))
Percentage of cells stained above control: 85.8%

N.B. Appropriate control samples should always be included in any labeling studies.

*** For optimal results in various applications, it is recommended that each investigator determine dilutions appropriate for individual use.**

Continued Overleaf...

REFERENCES:

1. Sasaki, K.T., Dumas, S.E. and Engleman, E.G. (1987) *Cytometry* 8:413.
2. Springer, T.A. (1981) *J. Bio/ Chem.* 256:3833.
3. Ho, M.K. and Springer, T.A. (1984) *Methods in Enzymology* 108:313.
4. Knisley, K.A. and Weitlauf, H.M. (1993) *Journal of Reproduction and Fertility.* 97:521
5. Weitlauf, H.M and Knisley, K.A. (1992) *Biology of Reproduction.* 46:811
6. Saada, A., Reichert, F. and Rotshenker, S. (1996) *The Journal of Cell Biology.* 133:159
7. Kowala, M. C. *et al.* (2000) *Atherosclerosis* **149**:323-330
8. Cua, D.J. *et al.* (1995) *Eur. J. Immunol.* 25: 2318-2324
9. Ho, M-K. *et al.* (1982) *J. of Immunol.* 28 (3):1221-1228
10. Mey, A. *et al.* (1996) *J of Immunol.* 156: 1572-1577
11. Leenen, P.J.M. *et al.* (1986) *Differentiation* 32: 157-164
12. Huang, H. *et al.* (1992) *Laboratory Investigation* 67 (1): 138-146
- used lavage cells and lung tissue

FOR RESEARCH USE ONLY

® is a registered trademark of Cedarlane Laboratories Ltd.