

# SARS-CoV-2 (COVID-19) Research

Your Expertise

Our Antibodies

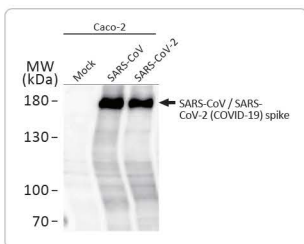
Accelerated Discovery

[www.genetex.com](http://www.genetex.com)

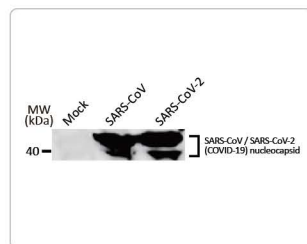


*High sensitivity and specificity  
Tested on true infected cells  
Validated by multiple independent researchers*

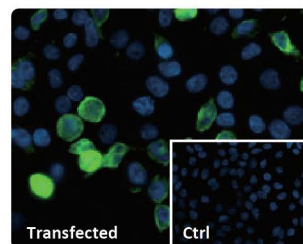
With SARS-CoV-2 now reaching pandemic status, researchers and clinicians have been working furiously to learn more about the virus's biology and pathogenesis as well as how to treat the more clinically aggressive COVID-19 cases. GeneTex is proud to offer an extensive line of research antibodies and proteins to support the study of SARS-CoV-2, several of which were validated using virus-infected cell lysates.



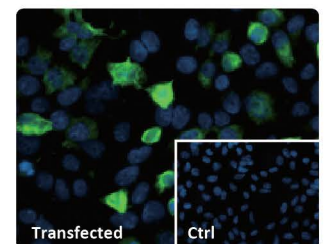
SARS-CoV / SARS-CoV-2 (COVID-19) spike antibody [1A9] (GTX632604)



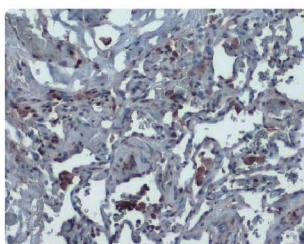
SARS-CoV / SARS-CoV-2 (COVID-19) nucleocapsid antibody [6H3] (GTX632269)



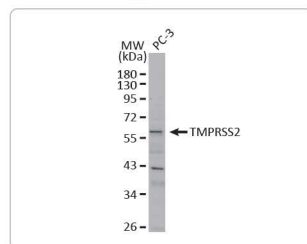
SARS-CoV-2 (COVID-19) spike antibody (GTX135356)



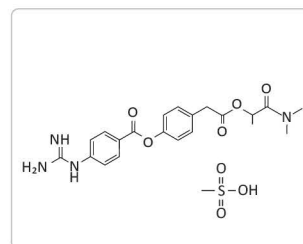
SARS-CoV-2 (COVID-19) nucleocapsid antibody (GTX135357)



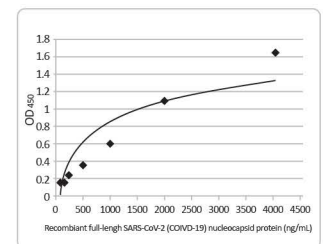
ACE2 antibody [N1N2], N-term (GTX101395)



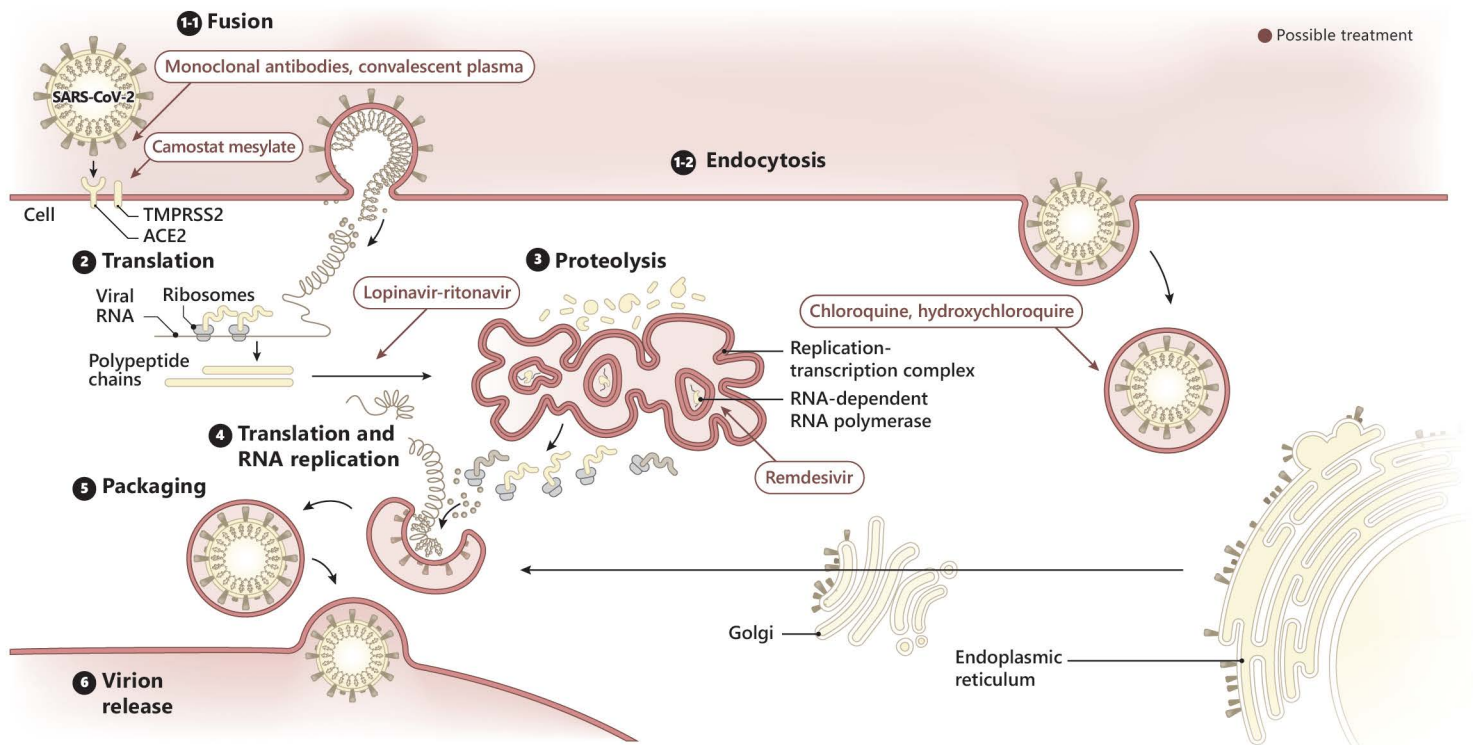
TMPRSS2 antibody [N2C3] (GTX100743)



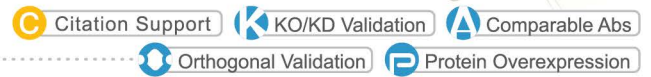
Camostat mesylate (GTX01523)



SARS-CoV-2 (COVID-19) nucleocapsid protein (GTX135357-pro)



## Selected Products



	Cat. No.	Product Name	Clonality	Applications
SARS-CoV-2 (COVID-19)	GTX135356	SARS-CoV-2 (COVID-19) spike antibody	pAb	WB, ICC/IF, ELISA
	GTX135357	SARS-CoV-2 (COVID-19) nucleocapsid antibody	pAb	WB, ICC/IF, ELISA
SARS-CoV & SARS-CoV-2	GTX632604	SARS-CoV / SARS-CoV-2 (COVID-19) spike antibody [1A9]	mAb	WB, ICC/IF, FACS
	GTX632269	SARS-CoV / SARS-CoV-2 (COVID-19) nucleocapsid antibody [6H3]	mAb	WB, ICC/IF, ELISA
	GTX632602	SARS-CoV / SARS-CoV-2 (COVID-19) ORF7a antibody [3C9]	mAb	WB, ICC/IF
	GTX632696	SARS-CoV / SARS-CoV-2 (COVID-19) NSP8 antibody [5A10]	mAb	WB
SARS-CoV	GTX632603	SARS-CoV Spike (SΔ3) antibody [7G12]	mAb	WB
MERS-CoV	GTX134864	MERS-CoV Spike (S1) antibody	pAb	WB
	GTX134868	MERS-CoV Nucleoprotein antibody	pAb	WB
	GTX134869	MERS-CoV ORF4a antibody	pAb	WB
	GTX134870	MERS-CoV ORF4b antibody	pAb	WB
	GTX134866	MERS-CoV M protein antibody	pAb	WB
Virus Entry Pathway	GTX101395	ACE2 antibody [N1N2], N-term	pAb	WB, IHC-P, FACS
	GTX102788	CD13 antibody	pAb	WB, IHC-P
	GTX011103	CD26 antibody [JM11-42]	mAb	WB, ICC/IF, IHC-P, FACS
	GTX100743	TMPRSS2 antibody [N2C3]	pAb	WB
	GTX100205	Caveolin 1 antibody [N1N3]	pAb	WB, ICC/IF, IHC-P, IP, IHC
	GTX26314	Cathepsin L antibody [33/2]	mAb	WB, IHC-Fr, ELISA
	GTX634336	LAMP1 antibody [GT25212]	mAb	WB, ICC/IF, IHC-P
	GTX127375	LC3B antibody	pAb	WB, ICC/IF, IHC-P, IHC-Fr, FACS, IP
	GTX113309	ATG5 antibody	pAb	WB, ICC/IF, IHC-P, PLA
	GTX102580	Grp78 antibody [N2C1], Internal	pAb	WB, ICC/IF, IHC-P, IP
	GTX634169	EEA1 antibody [GT10811]	mAb	WB, ICC/IF, IHC-P
Immune Response	GTX44531	CD4 antibody [GK1.5]	mAb	WB, ICC/IF, IHC-P, IHC-Fr, FACS, IP, ELISA
	GTX74773	CD8 antibody [LT8]	mAb	ICC/IF, IHC-P, IHC-Fr, FACS, IP, Blocking
	GTX15624	Interferon gamma antibody [2G1]	mAb	WB, ELISA, sELISA
	GTX103098	Interferon gamma Receptor 1 antibody	pAb	WB, IHC-P
	GTX11408	Interferon alpha antibody [G16] (Azide free)	mAb	WB, ELISA, Functional Assay
	GTX74034	IL1 beta antibody	mAb	WB, ICC/IF, IHC-P, IHC-Fr, ELISA, Functional Assay, IHC
	GTX110527	IL6 antibody	pAb	WB, IHC-P, IHC-Fr
	GTX32675	IL18 antibody	mAb	WB, IP
	GTX110520	TNF alpha antibody	pAb	WB, ICC/IF, IHC-P
	GTX60582	MCP1 / CCL2 antibody [2D8]	mAb	WB, ICC/IF, IHC-P, FACS, ELISA
	GTX116840	Gasdermin D antibody [N1N3]	pAb	WB
GTX101322	Caspase 1 antibody [N1N3]	pAb	WB, ICC/IF, IHC-P	