

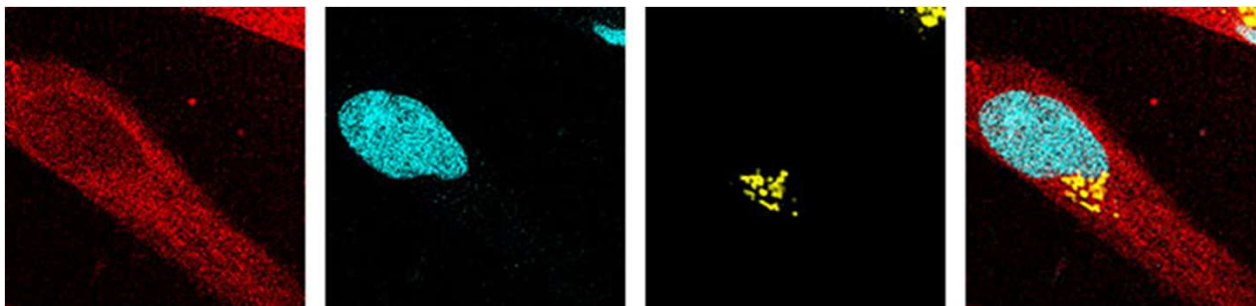
CaTM-2™ AM Assay Kit

Code no.	Product	Contents	Storage	Stability
GC505	CaTM-2™ AM Assay Kit	<ul style="list-style-type: none"> • CaTM-2 AM × 5 • Dimethylsulfoxide (DMSO) 1 mL × 1 • 20% Pluronic® F-127 1 mL × 1 • 20% Cremophor® EL 1 mL × 1 • 500 mM Probenecid 1 mL × 1 • 10 × Assay Buffer 15 mL × 1 	Store <-20° C, desiccate and protect from light. Storage of the DMSO/dye solution is NOT recommended.	1 year (unopened)

CaTM-2™/CaTM-2™ AM are red fluorescent calcium probes based on TokyoMagenta, a new red-colored fluorophore. They are designed to analyze calcium ion concentrations in. The advantages of long wavelength region are greater tissue penetration and low phototoxicity.

CaTM™-2 and CaTM™-2 AM are red fluorescent calcium probes which have maximum fluorescent wavelength at 609 nm. CaTM-2™ / CaTM-2™ AM are calcium probes which distribute uniformly in cytoplasm when loaded into cell and well-suited to analyze Ca²⁺ concentration in the cytoplasm.

CaTM-2 AM Assay kit is a ready-to-use screening set of CaTM-2 AM and appropriate for cell assay for 96 well plates. The kit contains detergent (Pluronic® F-127, Cremophor® EL) and anion transporter inhibitor (Probenecid), allowing you to set up the varying calcium concentrations needed.



Multicolor imaging using HeLa cells - HeLa cells, expressing CFP in nucleus and YFP in the Golgi, was introduced CaTM™-2 AM in order to do multicolor imaging. CaTM™-2 AM can be used for various multicolor imaging such as expressing fluorescent protein to an organelle and doing calcium imaging with the labeled cells.