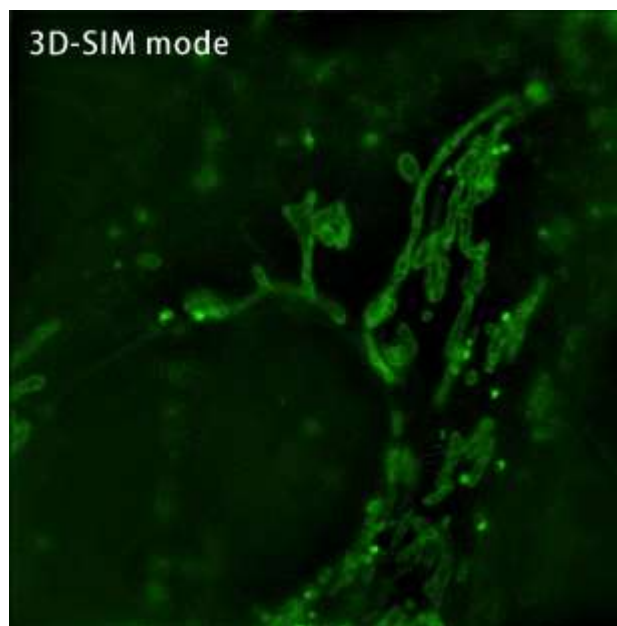
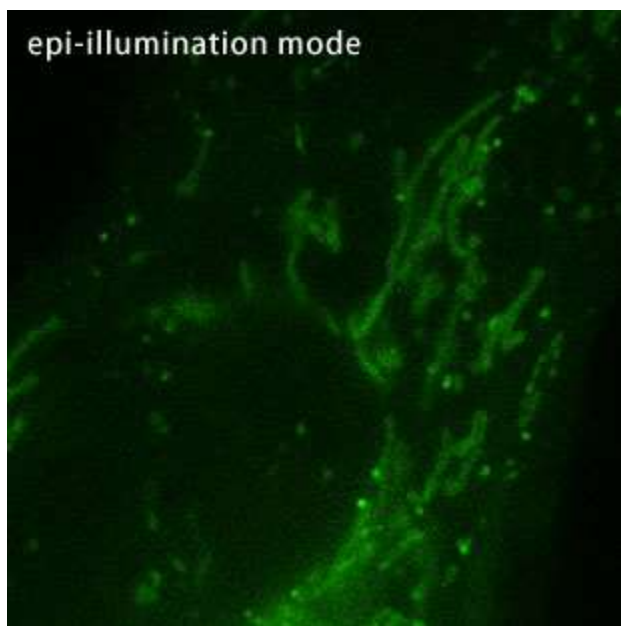


# POLARIC™-500c6F

| Catalog no. | Product name    | Amount        | Storage upon receipt  | Stability         |
|-------------|-----------------|---------------|---|-------------------|
| GC101       | POLARIC™-500c6F | 1μg × 10vials | Store under -20 °C, keep desiccated and protect from light.<br>Unrecommend storing DMSO solution of dye | 1 year (unopened) |

POLARIC™-500c6F is a solvatochromic dye developed for cell staining. Solvatochromic dye means the dyes change fluorescent colors because of their environment, such as localizing into an organelle.

POLARIC™-500c6F is appropriate for time-lapse observation due to its ability to stay inside the cells for longer periods of time compared to other dyes. Low cell toxicity makes it especially suited for use in living cells. POLARIC™-500c6F will change its emission spectra 550~630nm dynamically in different environments with a single excitation around 500nm.



HeLa cells were stained with POLARIC™-500c6F and imaged with a Structured Illumination Microscope (Nikon, N-SIM). Left: conventional wide-field epi-illumination fluorescence image, Right: 3D-SIM mode image. Ex:488nm, Em:510-550nm. SIM exhibits double the spatial resolution (~100nm) of the conventional wide-field image. This enables observation of microstructures, such as, mitochondria (right).