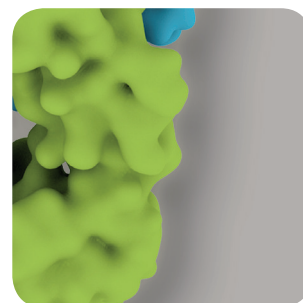
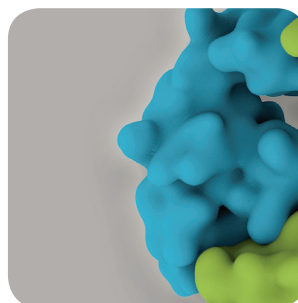
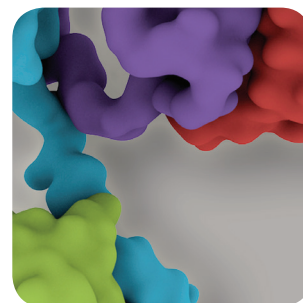


Your Antibody Source



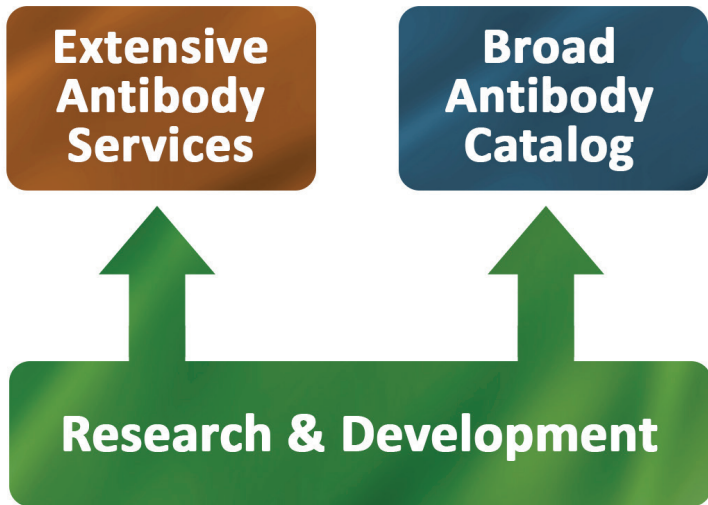
prosci-inc.com

Extensive Antibody Services
Broad Antibody Catalog



Company Overview

Established in 1998, ProSci Incorporated is a leading provider of high performance antibodies and custom antibody services. We have produced more than 10,000 custom monoclonal and polyclonal antibodies for researchers worldwide in academia, biotechnology, diagnostics, and pharmaceutical industries. Operating our own USDA licensed and NIH/OLAW assured animal facility in San Diego, California and performing immunological services in-house allows us to maintain control and quality of the antibody development process from beginning to end. This also gives us the flexibility to tailor antibody production for almost any antibody need.



ProSci's Research and Development team is the driving force behind our antibody services and product development. The extensive experience and expertise is carried over to all that we do.

Through research, we are actively developing antibodies to novel targets and have brought the first commercially available antibodies to market for such targets as H5N1, H1N1, SARS, and pSAMHD1 to name a few.

At ProSci, the customer comes first. We always tailor our offering around our customers' needs.

Here is what some of our customers are saying about us:

"The entire team - customer service, technical staff, and purchasing department are flexible and work with us no matter what the obstacle."

"I am grateful for the intimate and punctual customer service, as well as their willingness to tailor individual services to the customer's needs."

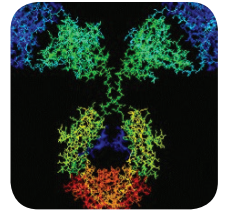
"The service is great and the antibodies speak for themselves."



TRACES

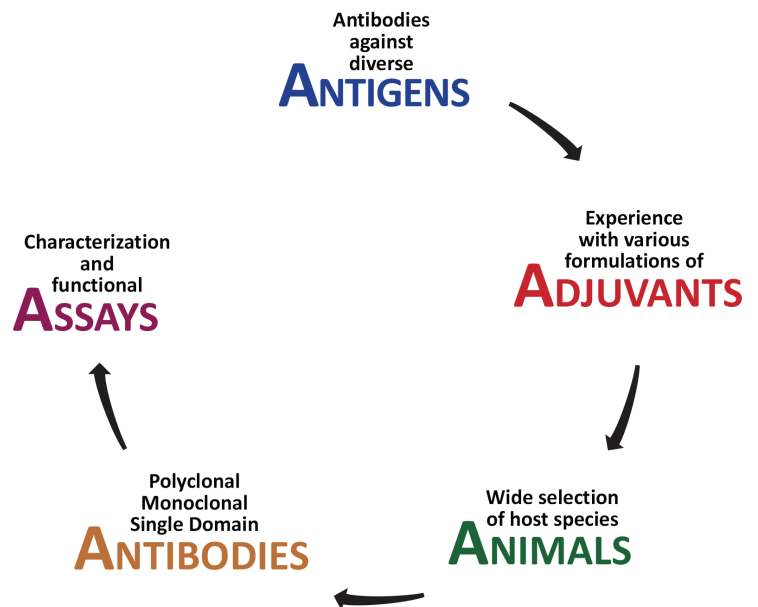
TRAde Control and Expert System





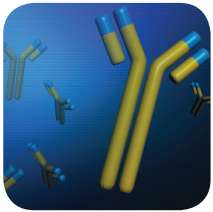
ProSci's 5 A's of Antibody Development

Antibody development is a multi-faceted process that begins with the target to which you wish to develop antibodies against: the antigen. To elicit an immune response we must select the appropriate adjuvant to be mixed with the antigen for immunization. Which animal to choose for antibody production may depend on the nature of your antigen and how much antibody you will need. The purpose and specific function required of your antibody will determine the type of antibody you choose. After your antibody has been produced, it can then be characterized to define its basic properties and functions through various assays.



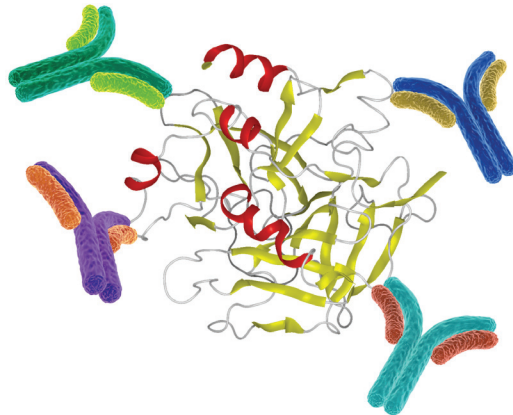
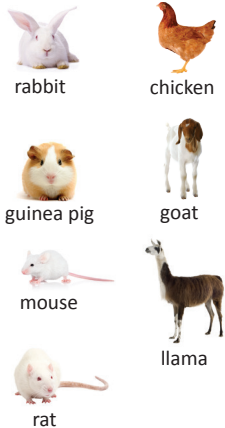
<p>Antigen The nature of the antigen is an important when choosing the antibody development path. An antigen's immunogenicity and size are two factors to consider.</p>	<ul style="list-style-type: none"> • Small Molecules • Carbohydrates • Antibody Variable Region (idiotype) • Proteins • Peptides
<p>Adjuvant Immune response enhancement is crucial to good antibody generation and production. Adjuvants serve as the immunostimulatory agent during immunization.</p>	<ul style="list-style-type: none"> • Freund's (CFA, IFA) • Aluminium Salts • Toll-Like Receptor Agonists
<p>Animals The antibody response to a given antigen will vary between species; each species offers its advantages and limitations.</p>	<ul style="list-style-type: none"> • Rabbit • Chicken • Mouse • Llama • Rat • Guinea Pig • Goat
<p>Antibody Antigen specificity and affinity, antibody size, quantity needed; these are some factors that will influence which antibody to use.</p>	<ul style="list-style-type: none"> • Polyclonal Ab • Single Domain Ab • Monoclonal Ab
<p>Assay The physical and functional properties of antibodies produced can be established through various assays.</p>	<ul style="list-style-type: none"> • Western Blot • Ag-specific Antibody Quantification • Functional Assays • ELISA • IHC • ICC





Extensive Antibody Services:

Polyclonal Services



Mixture of immunoglobulins and subclasses which will recognize multiple epitopes with relatively high affinity for the given antigen.

Features and Benefits

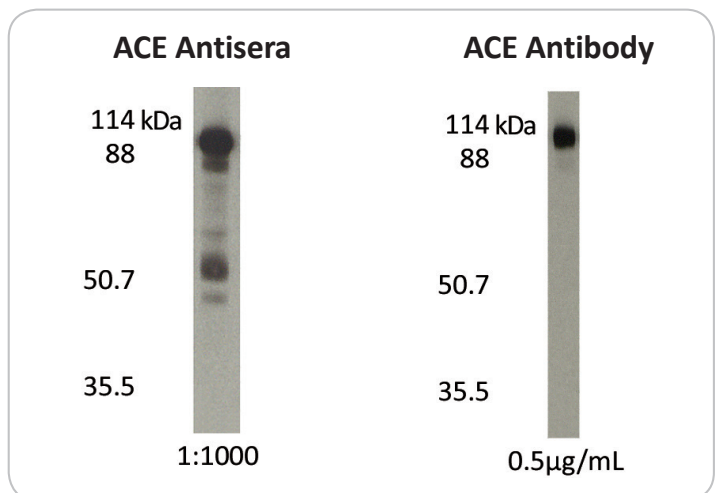
- Quick and inexpensive to produce
- High affinity
- Multiple host species available

Convenient Polyclonal Packages Available:

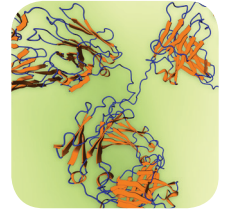
	Serum Package	Peptide Package	Purified Package
Antisera Schedule	●	●	●
Peptide Synthesis		●	●
Peptide Conjugation		●	●
ELISA Report		●	●
Affinity Purification			●

Immuno-Affinity Purification

Before and after images of crude antiserum against ACE peptide antigen (left) and immuno-affinity purified antibody using ACE peptide (right).



pAb • mAb • Single Domain



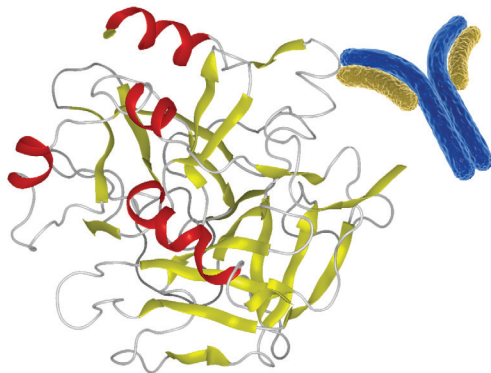
Monoclonal Services



mouse



rat



Homogenous antibody which recognizes one single epitope. In many cases, this results in significantly less background than polyclonal antibodies.

Features and Benefits

- Unlimited quantity and availability
- Lot-to-lot consistency
- High specificity

I. Hybridoma Development Process

Standard mouse monoclonal antibody generation begins with hybridoma development in three phases:



II. Monoclonal Antibody Production

In Vitro Production

Our methods have demonstrated 5-25 fold increase in yields over conventional monoclonal antibody cell culture techniques. Serum and serum-free medium formulations available; purification with protein G or A also available.

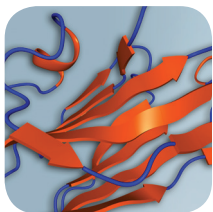
Ascites Production

In vivo monoclonal antibody production allows for cost-effective large scale production; purification with protein G or A also available.

Additional Services Available

- ELISA screening
- Western blot screening
- Immunocytochemical screening
- Additional final clones
- Additional clone isotyping



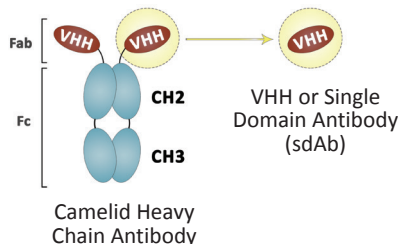
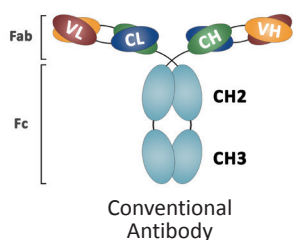


Extensive Antibody Services

Single Domain Antibody Services



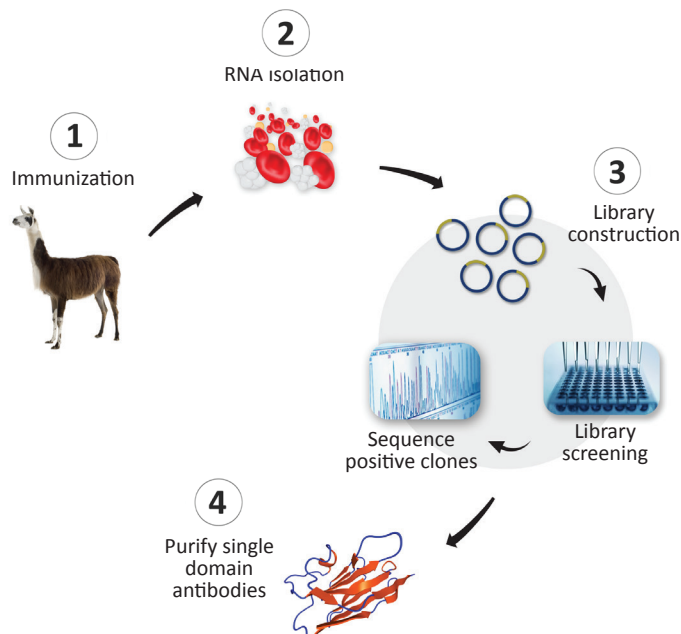
Llama



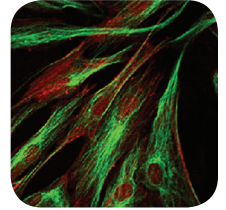
Features and Benefits	Polyclonal Antibody	Monoclonal Antibody	Single Domain Antibody
Size	150 kDa	150 kDa	15 kDa
Enhanced tissue penetration			●
Binds small cavities or clefts			●
High affinity	●		●
High specificity		●	●
Lot-to-lot consistency		●	●
Stable under extreme temperature and pH			●
Cost effective large scale production	●		●

Single Domain Antibody Development Process

1. Llama immunization with target antigen
2. RNA isolated from PBMCs collected from bleeds
3. VHH phage library constructed from RNA cDNA library is screened, binders selected High affinity binding clones are sequenced
4. Identified positive clones purified

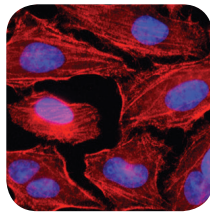
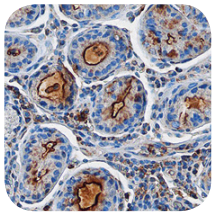
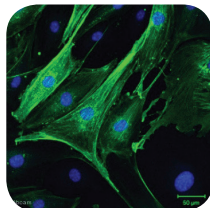
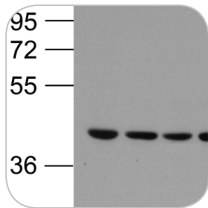


Broad Antibody Catalog



Our product catalog consists of over 18,000 primary antibodies against novel antigens in many life science research fields. We also offer secondary antibodies, recombinant proteins, cell and tissue lysates and slides, and immunoblots.

Primary Antibodies



Research Areas:

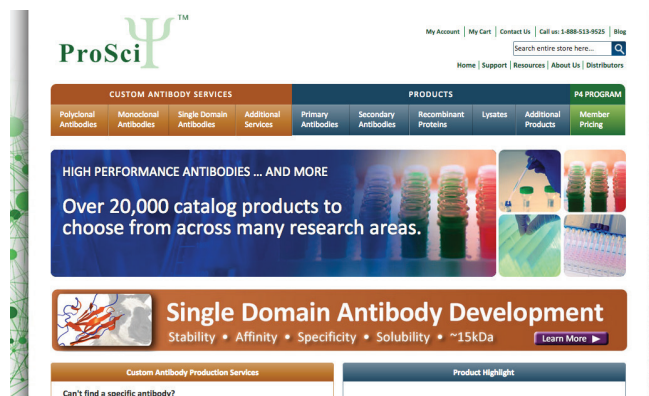
- Apoptosis
- Autophagy
- Cancer
- Cell Cycle
- Chemokines & Cytokines
- Growth Factors
- Homeostasis
- Immunology
- Infectious Disease
- Innate Immunity
- Neurobiology
- Obesity
- Signal Transduction
- Stem Cell

20 µg Trial Size
Antibodies
Available

Other Products

- Secondary Antibodies
- Recombinant Proteins
- Cell & Tissue Lysates
- Peptides
- Tissue Slides
- Detection Sets
- Immunoblots

Our catalog is regularly updated with new product additions, visit our website to see what's new!





CORPORATE HEADQUARTERS

ProSci Incorporated
12170 Flint Place
Poway, CA 92064
USA

CONTACT INFORMATION

Toll Free: (888) 513 9525
Local: (858) 513 2638
Fax: (858) 513 2692
E-Mail: info@prosci-inc.com

- **Established in 1998**
- **Flexible service packages simplify ordering**
- **Customizable service can be tailored to your needs**
- **In-house laboratories in San Diego, CA (USA)**
- **Animal facilities in San Diego, CA (USA)**
- **USDA licensed and NIH/OLAW assured animal facilities**