

CEDARLANE® 

Part of TCP Analytical Group

COMPLEMENT ANTIBODIES & PROTEINS

CEDARLANE® is an ISO 9001:2015 and
ISO 13485:2016 registered company

Complement Antibodies and Proteins

For over 50 years, Cedarlane has provided complement related products to the life science research and diagnostic communities. Cedarlane offers numerous formats of reagent complement as well as an extensive range of recombinant proteins and antibodies. We have antibodies to complement components, regulators and receptors which are offered in a variety of formats including purified and conjugates to biotin, FITC, PE, APC and Horseradish Peroxidase.

Complement Component C3

Complement component C3 (C3) is an immune system protein that plays a central role in the classical and alternative complement activation pathways. In the classical complement pathway, activation is seen to be antibody dependent. Downstream of this activation, C3 is cleaved to C3a and C3b by a C3 convertase (C4b2a). In contrast to the classical pathway, C3 is critical for initiation of the alternative complement pathway. C3b that arises from spontaneous hydrolysis of C3 binds microbial surfaces and remains in an active form. Bound C3b binds Factor B and makes it susceptible to cleavage by Factor D. The resulting C3 convertase (C3bBb complex) further enhances processing of C3 to C3a and C3b. C3a is released from the surface and functions as a peptide mediator of inflammation (anaphylatoxin). C3b becomes an integral part of the C5 convertases in both the classical and alternative pathways. These lead to the processing of C5 to C5a and C5b and ultimately to the generation of the membrane attack complex (MAC).

Antibodies

Specificity	Clone	Isotype	Species Reactivity	Application
C3	RmC11H9	Rat IgG2a	Mouse	IF, C, WB, E
C3a/C3a(desArg)/C3	K13/16	Mouse IgG1 K	Human	FN, IP, E, WB
C3/C3b/iC3b	6C9	Mouse IgG1	Human/Mouse	F, E
C3/C3b/iC3b	10C7	Mouse IgG1	Human/Mouse	F, E
C3/C3b/iC3b	7C12	Mouse IgG1	Human/Mouse	WB, F, E
C3/C3b/iC3b/C3d	1H8	Mouse IgG2a	Human/Mouse	WB, F, E

ELISA

Human C3a/C3a desArg	96 wells	CL76160K	Human	E
----------------------	----------	-----------------	-------	---

Complement Factor B

Complement factor B is an immune system protein that plays a major role in the alternative complement pathway. Factor B binds C3b in a Mg²⁺ dependent manner at the antigenic surface. This interaction exposes a site on factor B that serves as a substrate for the serum protease factor D. Factor D cleaves factor B bound to C3b, releasing a small fragment (Ba) and generating C3bBb. The resulting C3bBb complex has C3 convertase activity analogous to the C4b2a complex of the classical pathway. The C3 convertase enhances the processing of C3 leading to a marked increase in the number of C3b molecules deposited on the antigenic surface. This leads to the generation of the C3bBb3b complex, which exhibits C5 convertase activity, analogous to the C4b2a3b complex in the classical pathway. This is the convergence point of both the classical and alternative complement pathways.

Antibodies

Specificity	Clone	Isotype	Species Reactivity	Application
Factor Ba (Neo-Epitope)	D22/3	Mouse IgG2b K	Human	F, E, WB
Factor B/Bb	M13/12	Mouse IgG1 K	Human	IP, E, WB

Complement Antibodies

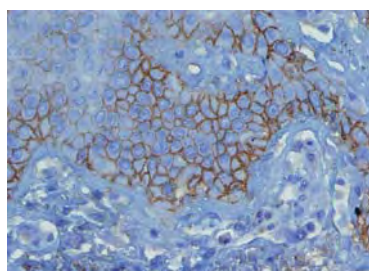
Specificity	Format	Clone	Isotype	Species Reactivity	Application	Size	Cat #
Activated C1s	Purified	M241	Mouse IgG2a	Human	F, C, P, E, WB, IP	100 µg	CL7318AP
Activated C3	Purified	bH6	Mouse IgG2a	Human	C, P, E	100 µg	CL7321AP
C1 Inhibitor	Purified		Goat IgG	Human	IP	5 mg	CL20023A
C1 Inhibitor	Aff. Purified		Goat IgG	Human	E, IP	0.5 mg	CL20023AP
C1 Inhibitor	HRPO		Goat IgG	Human	E	0.2 mg	CL20023HP
C1 Inhibitor	Aff. Purified		Sheep IgG	Human	E	1 mg	CL7340AP
C1q	Purified		Rabbit Ig	Rat	C, E, IP	100 µg	CL7333AP
C1q	Purified	Polyclonal	Rabbit IgG	Human	F, WB, E	200 µg	CL7633AP
C1q	Biotin	Polyclonal	Rabbit IgG	Human	F, WB, E	100 µg	CL7633B
C1q	HRPO	Polyclonal	Rabbit IgG	Human	WB, E	100 µg	CL7633HP
C1q	Purified	MhC5B9	Mouse IgG1	Human	IF, C, WB, E	250 µg	CL7611AP
C1q	Biotin	MhC5B9	Mouse IgG1	Human	IF	100 µg	CL7611B
C1q	FITC	MhC5B9	Mouse IgG1	Human	IF	100 µg	CL7611F
C1q	PE	MhC5B9	Mouse IgG1	Human	IF	50 µg	CL7611PE
C1q	Aff. Purified		Goat IgG	Human	E	1 mg	CL7341AP
C1q	Purified	RmC7H8	Rat IgG1	Mouse	IF, C, WB, E	250 µg	CL7501AP
C1q	Biotin	RmC7H8	Rat IgG1	Mouse	IF, E, WB	100 µg	CL7501B
C1q	FITC	RmC7H8	Rat IgG1	Mouse	IF	100 µg	CL7501F
C1q	PE	RmC7H8	Rat IgG1	Mouse	IF, E, WB, F	50 µg	CL7501PE
C1q, Recombinant	Protein			Human		200 µg	CLPRO554
C1q, Recombinant	Protein			Human		1 mg	CLPRO554-2
C1qBP (C1q Binding Protein)	Protein			Human		5 µg	CLPRO636
C1qBP (C1q Binding Protein)	Protein			Human		25 µg	CLPRO636-2
C1s	Purified	M81	Mouse IgG1	Human	F, C, P, E, WB, IP	100 µg	CL7317AP
C3	Purified		Rabbit Ig	Rat	E, WB	100 µg	CL7334AP
C3	Purified	RmC11H9	Rat IgG2a	Mouse	IF, C, WB, E	250 µg	CL7503AP
C3	Purified	RmC11H9	Rat IgG2a	Mouse	IF, E, WB, F, IHC, C	500 µg	CL7503AP-2
C3	Biotin	RmC11H9	Rat IgG2a	Mouse	IF, E, WB, F, IHC, C	100 µg	CL7503B
C3	FITC	RmC11H9	Rat IgG2a	Mouse	IF	100 µg	CL7503F
C3	No Azide	RmC11H9	Rat IgG2a	Mouse	IF, C, WB, E	1 mg	CL7503NA
C3	PE	RmC11H9	Rat IgG2a	Mouse	IF, E, WB, F, IHC, C	50 µg	CL7503PE
C3/C3a	Purified	474	Mouse IgG1	Human	E, WB	100 µg	CL7305AP
C3/C3a	Purified	2898	Mouse IgG1	Human	E, WB	100 µg	CL7307AP
C3a/C3a desArg	Purified	2991	Mouse IgG1	Human	E, WB	100 µg	CL7306AP
C3a/C3a desArg	ELISA Kit			Human	E	96 well	CL76160K
C3a/C3a(desArg)/C3	Purified	K13/16	Mouse IgG1 K	Human	FN, IP, E, WB	200 µg	CL7623AP
C3a/C3a(desArg)/C3	Biotin	K13/16	Mouse IgG1 K	Human	FN, IP, E, WB	100 µg	CL7623B
C3a/C3a(desArg)/C3	FITC	K13/16	Mouse IgG1 K	Human	WB	100 µg	CL7623F
C3a/C3a(desArg)/C3	PE	K13/16	Mouse IgG1 K	Human	WB	50 µg	CL7623PE
C3/C3b	Purified	2B10B9B2	Mouse IgM	Rat	E, WB	100 µg	CL7330AP

Legend for Applications: AC=Affinity Chromatography AGG=Agglutination C=Cryostat Sections CT=Cytotoxicity Assay D=Depletion E=ELISA EC=ELISA (Capture) ED=ELISA (Detection) F=Flow Cytometry FN=Functional Assay IC=Immunocytochemistry ID=Immunodiffusion IF=Immunofluorescence IP=Immunoprecipitation IV=In vivo Assay N=Neutralization P=Paraffin-Embedded Sections R=RIA WB=Western Blotting

Complement Antibodies (continued)

Specificity	Format	Clone	Isotype	Species Reactivity	Application	Size	Cat #
C3/C3b/iC3b	Purified	6C9	Mouse IgG1	Human/Mouse	F, E	250 µg	CL7631AP
C3/C3b/iC3b	Biotin	6C9	Mouse IgG1	Human/Mouse	F, E	100 µg	CL7631B
C3/C3b/iC3b	FITC	6C9	Mouse IgG1	Human/Mouse	F, E	100 µg	CL7631F
C3/C3b/iC3b	PE	6C9	Mouse IgG1	Human/Mouse	F, E	50 µg	CL7631PE
C3/C3b/iC3b	APC	6C9	Mouse IgG1	Human/Mouse	F	100 µg	CL7631APC
C3/C3b/iC3b	Purified	10C7	Mouse IgG1	Human/Mouse	F, E	250 µg	CL7632AP
C3/C3b/iC3b	Biotin	10C7	Mouse IgG1	Human/Mouse	F, E	100 µg	CL7632B
C3/C3b/iC3b	FITC	10C7	Mouse IgG1	Human/Mouse	F, E	100 µg	CL7632F
C3/C3b/iC3b	PE	10C7	Mouse IgG1	Human/Mouse	F, E	50 µg	CL7632PE
C3/C3b/iC3b	Purified	7C12	Mouse IgG1	Human/Mouse	WB, F, E	250 µg	CL7636AP
C3/C3b/iC3b	Biotin	7C12	Mouse IgG1	Human/Mouse	WB, F, E	100 µg	CL7636B
C3/C3b/iC3b	FITC	7C12	Mouse IgG1	Human/Mouse	WB, F	100 µg	CL7636F
C3/C3b/iC3b	PE	7C12	Mouse IgG1	Human/Mouse	WB, F	50 µg	CL7636PE
C3/C3b/iC3b/C3d	Purified	1H8	Mouse IgG2a	Human/Mouse	WB, F, E	250 µg	CL7637AP
C3/C3b/iC3b/C3d	Biotin	1H8	Mouse IgG2a	Human/Mouse	WB, F, E	100 µg	CL7637B
C3/C3b/iC3b/C3d	FITC	1H8	Mouse IgG2a	Human/Mouse	WB, F	100 µg	CL7637F
C3/C3b/iC3b/C3d	PE	1H8	Mouse IgG2a	Human/Mouse	WB, F	50 µg	CL7637PE
C3a receptor	Purified	74	Mouse IgG1	Rat	F, C	250 µg	CL031AP
C3a receptor	Biotin	74	Mouse IgG1	Rat	F, C	100 µg	CL031B
C3a receptor	FITC	74	Mouse IgG1	Rat	F, C	100 µg	CL031F
C3a receptor	PE	74	Mouse IgG1	Rat	F, C	50 µg	CL031PE
C3aR	Purified	17	Mouse IgG2b	Human	F, C	100 µg	CL7322AP
C3c	Purified	4	Rat IgG2a	Human	IP	100 µg	CL7323AP
C3c, Recombnant	Protein			Human		200 µg	CLPRO555
C3c, Recombnant	Protein			Human		1 mg	CLPRO555-2
C3d	Purified-Concentrated	E28-P	Rabbit IgG	Human	C, P	0.5 mL	CL2904AP-0.5
C3d	Purified-Concentrated	E28-P	Rabbit IgG	Human	C, P	1 mL	CL2904AP-1
C3d	Ready to Use	E28-P	Rabbit IgG	Human	C, P	7 mL	CL2904AP-7
C3d	Ready to Use	E28-P	Rabbit IgG	Human	C, P	15 mL	CL2904AP-15
C4	Purified		Rabbit Ig	Rat	E, IP	100 µg	CL7335AP

Legend for Applications: AC=Affinity Chromatography AGG=Agglutination C=Cryostat Sections CT=Cytotoxicity Assay D=Depletion E=ELISA EC=ELISA (Capture) ED=ELISA (Detection) F=Flow Cytometry FN=Functional Assay IC=Immunocytochemistry ID=Immunodiffusion IF=Immunofluorescence IP=Immunoprecipitation IV=In vivo Assay N=Neutralization P=Paraffin-Embedded Sections R=RIA WB=Western Blotting



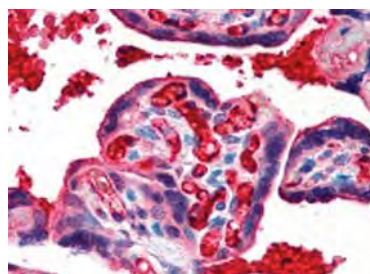
Anti-Human C3d (Purified)

Formalin-fixed, paraffin-embedded human skin biopsy (4 µm) from lesion of the early pemphigus vulgaris (without blister formation), stained with anti-C3d complement (CL2904AP) antibody shows strong positive intraepidermal intercellular immunostaining.

Complement Antibodies (continued)

Specificity	Format	Clone	Isotype	Species Reactivity	Application	Size	Cat #
C4	Purified	RmC16D2	Rat IgG2a	Mouse	IF, C, WB, E	250 µg	CL7504AP
C4	Purified	RmC16D2	Rat IgG2a	Mouse	IF, C, WB, E	500 µg	CL7504AP-2
C4	Biotin	RmC16D2	Rat IgG2a	Mouse	IF, E, WB, F, IHC, C	100 µg	CL7504B
C4	FITC	RmC16D2	Rat IgG2a	Mouse	IF	100 µg	CL7504F
C4	No Azide	RmC16D2	Rat IgG2a	Mouse	IF, C, WB, E	1 mg	CL7504NA
C4b	Purified		Chicken IgY	Human	E, WB, P, F	500 µg	CL2154AP
C4c, Recombinant	Protein			Human		200 µg	CLPRO556
C4c, Recombinant	Protein			Human		1 mg	CLPRO556-2
C4d	Purified-Concentrated	A24-T	Rabbit IgG	Human	C, P,	0.5 mL	CL2899AP-0.5
C4d	Purified-Concentrated	A24-T	Rabbit IgG	Human	C, P	1 mL	CL2899AP-1
C4d	Ready to Use	A24-T	Rabbit IgG	Human	C, P	7 mL	CL2899AP-7
C4d	Ready to Use	A24-T	Rabbit IgG	Human	C, P	15 mL	CL2899AP-15
C4d	Purified	12D11	Mouse IgG1	Human	E, WB, C	100 µg	CL7324AP
C4d	Purified	7H4	Mouse IgG1	Human	E, WB, C	100 µg	CL7325AP
C4d	Purified	C3F.7	Mouse IgG1	Human	C	100 µg	CL7350AP
C5	Aff. Purified		Goat IgG	Human	E	0.5 mg	CL7342AP
C5	Aff. Purified		Sheep IgG	Human	E	1 mg	CL7343AP
C5/C5a	Purified	561	Mouse IgG2a	Human	E, IP, WB	100 µg	CL7308AP
C5/C5a	Purified	557	Mouse IgG2a	Human	E	100 µg	CL7309AP
C5/C5b	Purified	568	Mouse IgG2a	Human	E, WB	100 µg	CL7312AP
C5a	Purified		Rabbit IgG	Human	E	200 µg	CL7635AP
C5a	Biotin		Rabbit IgG	Human	E	100 µg	CL7635B
C5a, Recombinant	Protein			Mouse		50 µg	CL7336R

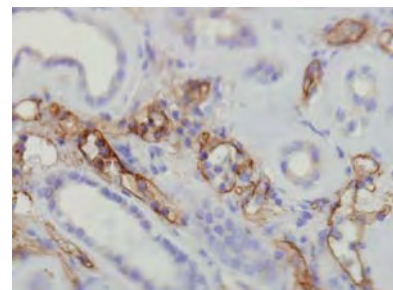
Legend for Applications: **AC**=Affinity Chromatography **AGG**=Agglutination **C**=Cryostat Sections **CT**=Cytotoxicity Assay **D**=Depletion **E**=ELISA **EC**=ELISA (Capture) **ED**=ELISA (Detection) **F**=Flow Cytometry **FN**=Functional Assay **IC**=Immunocytochemistry **ID**=Immunodiffusion **IF**=Immunofluorescence **IP**=Immunoprecipitation **IV**=*In vivo* Assay **N**=Neutralization **P**=Paraffin-Embedded Sections **R**=RIA **WB**=Western Blotting

**Anti-Human C4b (Purified)**

IHC staining of formalin-fixed, paraffin-embedded human tissues (placenta) using Purified Anti-Human Complement Component C4b (CL2154AP) at a dilution of 20 µg/mL.

Anti-Human C4d (Purified)

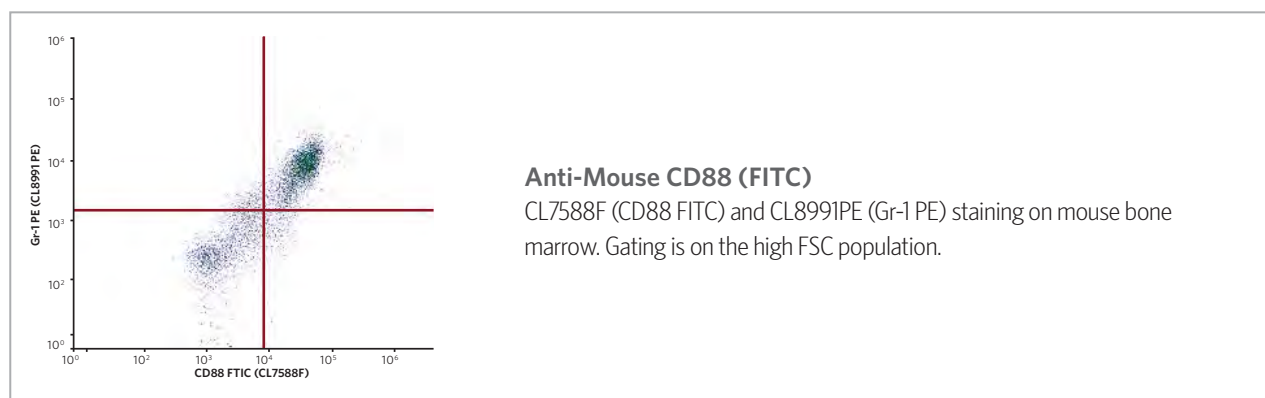
Formalin-fixed, paraffin-embedded human transplanted kidney stained with anti-C4d complement (CL2899AP-1) antibody shows diffuse strong positive immunostaining of peritubular and glomerular capillaries.



Complement Antibodies (continued)

Specificity	Format	Clone	Isotype	Species Reactivity	Application	Size	Cat #
C5a, Recombinant	Protein			Human		50 µg	CL7338R
C5a desArg, Recombinant	Protein			Mouse		50 µg	CL7337R
C5a desArg, Recombinant	Protein			Human		50 µg	CL7339R
C5a/C5a desArg	Purified	2942	Mouse IgG2a	Human	E, WB	100 µg	CL7310AP
C5a/C5a desArg	Purified	2952	Mouse IgG1	Human	E, WB	100 µg	CL7311AP
C5a/C5a(desArg) (Neo-Epitope)	Purified	C17/5	Mouse IgG1 K	Human	E, WB	200 µg	CL7624AP
C5a/C5a(desArg) (Neo-Epitope)	Biotin	C17/5	Mouse IgG1 K	Human	E, WB	100 µg	CL7624B
C5a/C5a(desArg) (Neo-Epitope)	FITC	C17/5	Mouse IgG1 K	Human	WB	100 µg	CL7624F
C5a/C5a(desArg) (Neo-Epitope)	PE	C17/5	Mouse IgG1 K	Human	WB	50 µg	CL7624PE
C5a Receptor (CD88)	Purified	20/70	Rat IgG2b	Mouse	F, IF, Blocking	250 µg	CL7588AP
C5a Receptor (CD88)	Biotin	20/70	Rat IgG2b	Mouse	F, IF, Blocking	100 µg	CL7588B
C5a Receptor (CD88)	FITC	20/70	Rat IgG2b	Mouse	F, IF, Blocking	100 µg	CL7588F
C5a Receptor (CD88)	No Azide	20/70	Rat IgG2b	Mouse	F, IF, Blocking	1 mg	CL7588NA
C5a Receptor (CD88)	PE	20/70	Rat IgG2b	Mouse	F, IF, Blocking	50 µg	CL7588PE
C5a Receptor (CD88)	Purified	8D6	Rat IgG2a	Human	F	250 µg	CL7688AP
C5a Receptor (CD88)	Biotin	8D6	Rat IgG2a	Human	F	100 µg	CL7688B
C5a Receptor (CD88)	FITC	8D6	Rat IgG2a	Human	F	100 µg	CL7688F
C5a Receptor (CD88)	PE	8D6	Rat IgG2a	Human	F	50 µg	CL7688PE
C5aR	Purified	R63	Mouse IgG1	Rat	C, F	100 µg	CL7326AP
C9	Purified	X197	Mouse IgG1	Human	F, C, P, E, WB	100 µg	CL7319AP
C9	FITC	X197	Mouse IgG1	Human	F	100 µg	CL7319F
C9	Aff. Purified		Sheep IgG	Human	E	1 mg	CL7344AP
CD11b (Mac-1; Ly 40; CR3a)	Ascites	M1/70.15	Rat IgG2b	Mouse	F, C, P, IP, WB, FN	0.5 mL	CL8941A

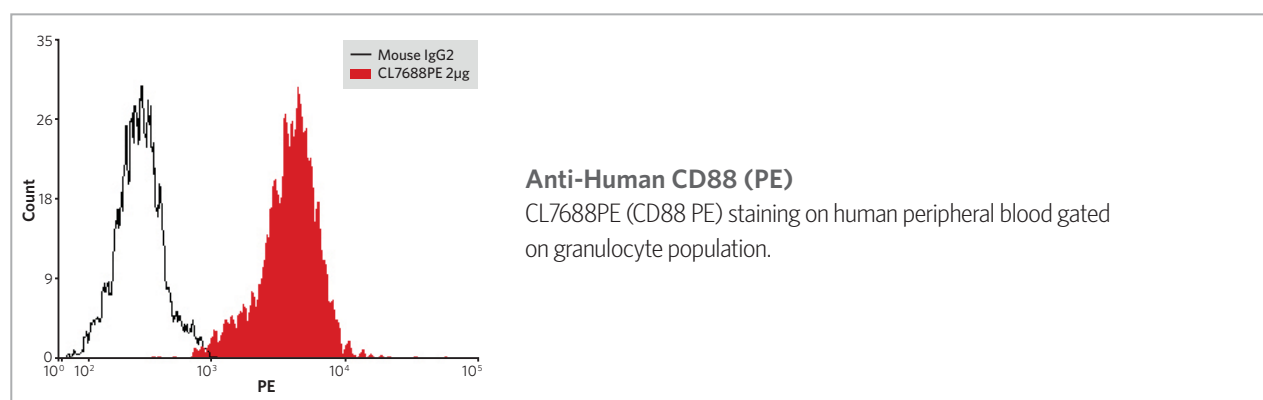
Legend for Applications: **AC**=Affinity Chromatography **AGG**=Agglutination **C**=Cryostat Sections **CT**=Cytotoxicity Assay **D**=Depletion **E**=ELISA **EC**=ELISA (Capture) **ED**=ELISA (Detection) **F**=Flow Cytometry **FN**=Functional Assay **IC**=Immunocytochemistry **ID**=Immunodiffusion **IF**=Immunofluorescence **IP**=Immunoprecipitation **IV**=*In vivo* Assay **N**=Neutralization **P**=Paraffin-Embedded Sections **R**=RIA **WB**=Western Blotting



Complement Antibodies (continued)

Specificity	Format	Clone	Isotype	Species Reactivity	Application	Size	Cat #
CD11b (Mac-1; Ly 40; CR3a)	Purified	M1/70.15	Rat IgG2b	Mouse	F, C, P, IP, WB, FN	250 µg	CL8941AP
CD11b (Mac-1; Ly 40; CR3a)	Biotin	M1/70.15	Rat IgG2b	Mouse	F, C, P	100 µg	CL8941B
CD11b (Mac-1; Ly 40; CR3a)	FITC	M1/70.15	Rat IgG2b	Mouse	F	100 µg	CL8941F
CD11b (Mac-1; Ly 40; CR3a)	PE	M1/70.15	Rat IgG2b	Mouse	F	50 µg	CL8941PE
CD11b/c (pan macrophage)	Ascites	OX-42	Mouse IgG2a	Rat	F, IP, C, P, FN	0.5 mL	CL042A
CD11b/c (pan macrophage)	Purified	OX-42	Mouse IgG2a	Rat	F, IP, C, P	250 µg	CL042AP
CD11b/c (pan macrophage)	Biotin	OX-42	Mouse IgG2a	Rat	F, C, P	100 µg	CL042B
CD11b/c (pan macrophage)	FITC	OX-42	Mouse IgG2a	Rat	F	100 µg	CL042F
CD11b/c (pan macrophage)	PE	OX-42	Mouse IgG2a	Rat	F	50 µg	CL042PE
CD21	Purified	21A/5	Mouse IgG1	Human	F, C	200 µg	CL7613AP
CD21	Biotin	21A/5	Mouse IgG1	Human	F, C	100 µg	CL7613B
CD21	FITC	21A/5	Mouse IgG1	Human	F, C	100 µg	CL7613F
CD21	PE	21A/5	Mouse IgG1	Human	F, C	50 µg	CL7613PE
CD21	APC	21A/5	Mouse IgG1	Human	F, C	100 µg	CL7613APC
CD35	Purified	To5	Mouse IgG1	Human	F, WB, C	200 µg	CL7614AP
CD35	Biotin	To5	Mouse IgG1	Human	F, WB, C	100 µg	CL7614B
CD35	FITC	To5	Mouse IgG1	Human	F, WB, C	100 µg	CL7614F
CD35	PE	To5	Mouse IgG1	Human	F, WB, C	50 µg	CL7614PE
CD35	APC	To5	Mouse IgG1	Human	F, C	100 µg	CL7614APC
CD46	Purified	M177	Mouse IgG1	Human	F, C, P, E, WB, IP	100 µg	CL7314AP
CD46	FITC	M177	Mouse IgG1	Human	F	100 µg	CL7314F
CD55	Purified	D17	Mouse IgG1	Human	F, WB	100 µg	CL7315AP
CD55	FITC	D17	Mouse IgG1	Human	F	100 µg	CL7315F

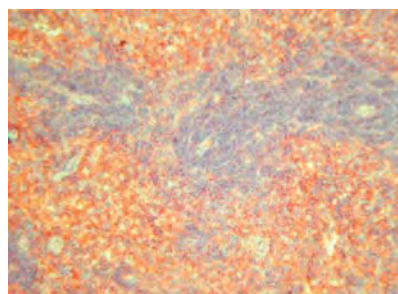
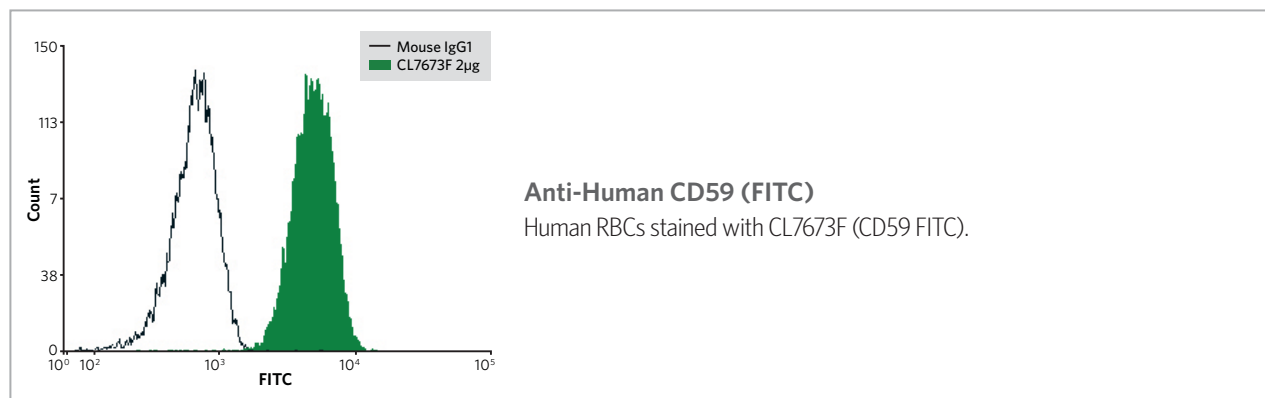
Legend for Applications: **AC**=Affinity Chromatography **AGG**=Agglutination **C**=Cryostat Sections **CT**=Cytotoxicity Assay **D**=Depletion **E**=ELISA **EC**=ELISA (Capture) **ED**=ELISA (Detection) **F**=Flow Cytometry **FN**=Functional Assay **IC**=Immunocytochemistry **ID**=Immunodiffusion **IF**=Immunofluorescence **IP**=Immunoprecipitation **IV**=In vivo Assay **N**=Neutralization **P**=Paraffin-Embedded Sections **R**=RIA **WB**=Western Blotting



Complement Antibodies (continued)

Specificity	Format	Clone	Isotype	Species Reactivity	Application	Size	Cat #
CD59 (Protectin)	Purified	1F5	Mouse IgG1	Human	F	250 µg	CL7673AP
CD59 (Protectin)	Biotin	1F5	Mouse IgG1	Human	F	100 µg	CL7673B
CD59 (Protectin)	FITC	1F5	Mouse IgG1	Human	F	100 µg	CL7673F
CD59 (Protectin)	PE	1F5	Mouse IgG1	Human	F	50 µg	CL7673PE
CHIPS, C-terminus	Purified	JCC1	Mouse IgG1	Misc. CHIPS	C, F, WB	100 µg	CL7331AP
CHIPS, N-terminus	Purified	JNC1	Mouse IgG1	Misc. CHIPS	C, F, WB	100 µg	CL7332AP
Crry	Purified	5I2	Mouse IgG1	Rat	F, C	250 µg	CL064AP
Crry	Biotin	5I2	Mouse IgG1	Rat	F, C	100 µg	CL064B
Crry	FITC	5I2	Mouse IgG1	Rat	F, C	100 µg	CL064F
DAF (CD55)	Purified	RIKO-3	Hamster IgG (Armenian)	Mouse	F, E, WB	250 µg	CL7540AP
DAF (CD55)	Biotin	RIKO-3	Hamster IgG (Armenian)	Mouse	F, E, WB	100 µg	CL7540B
DAF (CD55)	FITC	RIKO-3	Hamster IgG (Armenian)	Mouse	F, E, WB	100 µg	CL7540F
DAF (CD55)	PE	RIKO-3	Hamster IgG (Armenian)	Mouse	F, E, WB	50 µg	CL7540PE
Factor B (C3 Proactivator)	Aff. Purified		Goat IgG	Human	E	1 mg	CL7345AP
Factor B (C3 Proactivator)	Aff. Purified		Sheep IgG	Human	E	1 mg	CL7346AP

Legend for Applications: AC=Affinity Chromatography AGG=Agglutination C=Cryostat Sections CT=Cytotoxicity Assay D=Depletion E=ELISA EC=ELISA (Capture) ED=ELISA (Detection) F=Flow Cytometry FN=Functional Assay IC=Immunocytochemistry ID=Immunodiffusion IF=Immunofluorescence IP=Immunoprecipitation IV=*In vivo* Assay N=Neutralization P=Paraffin-Embedded Sections R=RIA WB=Western Blotting

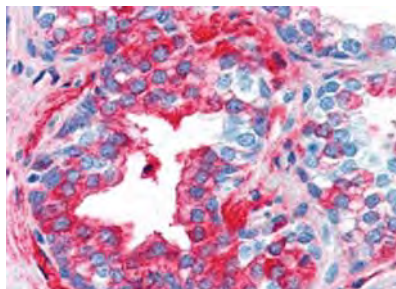
**Anti-Rat Crry (Purified)**

CL064AP [Anti-Rat Crry, Purified (Clone 5I2)] staining of rat spleen (Frozen section) at a concentration of 0.1 µg/mL (Magnification approximately 150X).

Complement Antibodies (continued)

Specificity	Format	Clone	Isotype	Species Reactivity	Application	Size	Cat #
Factor Ba (Neo-Epitope)	Purified	D22/3	Mouse IgG2b K	Human	F, E, WB	200 µg	CL7618AP
Factor Ba (Neo-Epitope)	Biotin	D22/3	Mouse IgG2b K	Human	F, E, WB	100 µg	CL7618B
Factor Ba (Neo-Epitope)	FITC	D22/3	Mouse IgG2b K	Human	F, WB	100 µg	CL7618F
Factor Ba (Neo-Epitope)	PE	D22/3	Mouse IgG2b K	Human	F, WB	50 µg	CL7618PE
Factor B/Bb	Purified	M13/12	Mouse IgG1 K	Human	IP, E, WB	200 µg	CL7619AP
Factor B/Bb	Biotin	M13/12	Mouse IgG1 K	Human	IP, E, WB	100 µg	CL7619B
Factor B/Bb	FITC	M13/12	Mouse IgG1 K	Human	WB	100 µg	CL7619F
Factor B/Bb	PE	M13/12	Mouse IgG1 K	Human	WB	50 µg	CL7619PE
Factor H	Purified	OX-24	Mouse IgG1	Human	F, E, IP, WB	250 µg	CL7672AP
Factor H	Biotin	OX-24	Mouse IgG1	Human	E	100 µg	CL7672B
Factor H	FITC	OX-24	Mouse IgG1	Human	E	100 µg	CL7672F
Factor I	Purified	OX-21	Mouse IgG1	Human	E	250 µg	CL7671AP
Factor I	Biotin	OX-21	Mouse IgG1	Human	E	100 µg	CL7671B
Factor I	FITC	OX-21	Mouse IgG1	Human	E	100 µg	CL7671F
gC1qR	Ascites	60.11	Mouse IgG1k	Human	F, WB, E	0.5 mL	CL7601A
gC1qR	Purified	60.11	Mouse IgG1k	Human	F, WB, E	250 µg	CL7601AP
gC1qR	Biotin	60.11	Mouse IgG1k	Human	F, WB, E	100 µg	CL7601B
gC1qR	FITC	60.11	Mouse IgG1k	Human	F, WB, E	100 µg	CL7601F
gC1qR	Ascites	74.5.2	Mouse IgG1k	Human	F, WB, E	0.5 mL	CL7602A
gC1qR	Purified	74.5.2	Mouse IgG1k	Human	F, WB, E	250 µg	CL7602AP
gC1qR	PE	74.5.2	Mouse IgG1k	Human	F, WB, E	50 µg	CL7602PE
MBL	Purified	3E7	Mouse IgG1	Human	F, C, WB, E	100 µg	CL7304AP
MBL	FITC	3E7	Mouse IgG1	Human	F, C, E	100 µg	CL7304F
MBL	Purified	D8.18	Mouse IgG1	Human	F, WB, E	100 µg	CL7313AP
MBL	Biotin	D8.18	Mouse IgG1	Human	F, WB, E	50 µg	CL7313B
MBL-A	Purified	8G6	Rat IgG	Mouse	WB, C, E	100 µg	CL7300AP
MBL-A	Purified	2B4	Rat IgG	Mouse	WB, E	100 µg	CL7301AP
MBL-C	Purified	16A8	Rat IgG2a	Mouse	WB, E	100 µg	CL7302AP

Legend for Applications: AC=Affinity Chromatography AGG=Agglutination C=Cryostat Sections CT=Cytotoxicity Assay D=Depletion E=ELISA EC=ELISA (Capture) ED=ELISA (Detection) F=Flow Cytometry FN=Functional Assay IC=Immunocytochemistry ID=Immunodiffusion IF=Immunofluorescence IP=Immunoprecipitation IV=*In vivo* Assay N=Neutralization P=Paraffin-Embedded Sections R=RIA WB=Western Blotting

**Anti-Human Factor H (Purified)**

IHC staining of formalin-fixed, paraffin-embedded human tissues (prostate) using Purified Anti-Human Factor H (CL7672AP) at a dilution of 20 µg/mL.

Complement Antibodies (continued)

Specificity	Format	Clone	Isotype	Species Reactivity	Application	Size	Cat #
MBL-C	Purified	14D12	Rat IgG2a	Mouse	WB, C, E	100 µg	CL7303AP
SP-D	Purified	IIIH3	Mouse IgG1	Rat	E, P, WB	100 µg	CL7327AP
SP-D	Purified	VIF9	Mouse IgG1	Rat	E, P, WB	100 µg	CL7328AP
SP-D	Purified	IVG8	Mouse IgG1	Rat	E, P, WB	100 µg	CL7329AP

Legend for Applications: **AC**=Affinity Chromatography **AGG**=Agglutination **C**=Cryostat Sections **CT**=Cytotoxicity Assay **D**=Depletion **E**=ELISA **EC**=ELISA (Capture) **ED**=ELISA (Detection) **F**=Flow Cytometry **FN**=Functional Assay **IC**=Immunocytochemistry **ID**=Immunodiffusion **IF**=Immunofluorescence **IP**=Immunoprecipitation **IV**=In vivo Assay **N**=Neutralization **P**=Paraffin-Embedded Sections **R**=RIA **WB**=Western Blotting

Complement Proteins

Description	Species Reactivity	Format	Size	Cat #
C1q	Human	Protein	200 µg	CLPRO554
C1q	Human	Protein	1 mg	CLPRO554-2
C1qBP (C1q Binding Protein)	Human	Protein	5 µg	CLPRO636
C1qBP (C1q Binding Protein)	Human	Protein	25 µg	CLPRO636-2
C3c	Human	Protein	200 µg	CLPRO555
C3c	Human	Protein	1 mg	CLPRO555-2
C4c	Human	Protein	200 µg	CLPRO556
C4c	Human	Protein	1 mg	CLPRO556-2
C5a desArg, Recombinant	Mouse	Protein	50 µg	CL7337R
C5a desArg, Recombinant	Human	Protein	50 µg	CL7339R
C5a, Recombinant	Mouse	Protein	50 µg	CL7336R
C5a, Recombinant	Human	Protein	50 µg	CL7338R

Notes

Lined writing area for notes, consisting of multiple horizontal lines.

CEDARLANE®

Part of TCP Analytical Group

CANADA

4410 Paletta Ct Suite A - L7L 5R2
Burlington, Ontario, Canada
E-mail: general@cedarlanelabs.com
Toll Free: 1-800-268-5058
Ph: (289) 288-0001
Fax: (289) 288-0020

USA

1210 Turrentine St, Burlington, North
Carolina - 27215, United States
E-mail: service@cedarlanelabs.com
Toll Free: 1-800-721-1644
Ph: (336) 513-5135
Fax: (336) 513-5138



**CEDARLANE® is an ISO 9001:2015 and
ISO 13485:2016 registered company**