

What is in your monoclonal?



BioAssay Works® Iso-Gold™ Rapid Mouse-Monoclonal Isotyping Kit

Isotyping and purity determination at its best. In five minutes

- ▶ Determine the isotype of your monoclonal antibody
- ▶ Assess the purity of your purified monoclonal antibody
- ▶ Verify the purity of your purchased monoclonal antibody – multiple lines indicate subclass contamination.
- ▶ Reduce the traditional ELISA kit day-and-a-half procedure runtime to a five-minute assay.

Available in the following kit sizes:

Product Code	Description	Qty	Size
TISO-001	Iso-Gold™ Rapid Mouse-Monoclonal Isotyping Kit	1	5 test pouches
ISOT-001	Iso-Gold™ Rapid Mouse-Monoclonal Isotyping Kit	1	10 test pouches
KISO-001	Iso-Gold™ Rapid Mouse-Monoclonal Kit with Kappa and Lambda Light Chains	1	10 test pouches
KSOT-001	Iso-Gold™ Rapid Mouse-Monoclonal Kit with Kappa and Lambda Light Chains	1	20 test pouches



Please contact CEDARLANE for more information.

In CANADA: Toll Free: 1-800-268-5058

CEDARLANE®

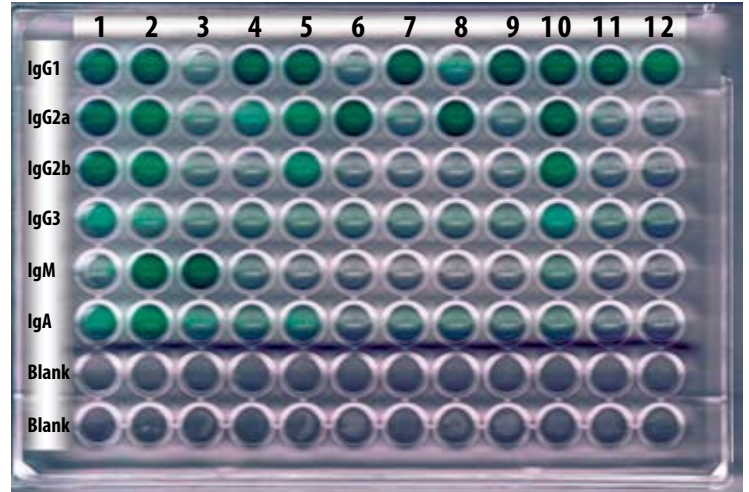
www.cedarlanelabs.com

ISO 9001:2000 and ISO 13485:2003 registered.



BioAssay Works® Iso-Gold™ Rapid Mouse-Monoclonal Isotyping Kit correlation with ELISA format isotyping assay

A study compared the monoclonal isotyping results of a widely used ELISA-format isotyping assay and a new, rapid-format BioAssay Works® Iso-Gold™ Rapid, Mouse-Monoclonal Isotyping Kit. The results demonstrate outstanding correlation between these two assay formats. The ELISA required controls, ELISA plate, and substrate, and took eight hours of hands-on time to coat the plates, block, and subsequently perform the assay on twelve different antibodies. The Iso-Gold pipetting time was ten minutes, and all twenty assays were run simultaneously. The Iso-Gold Rapid, Mouse-Monoclonal Isotyping Kit pipetting time was ten minutes and all twenty assays were run simultaneously. Each was read at five minutes. Thus the total hands-on time, including scoring of the results, was under twenty minutes.



Anti-	mAb	1	2	3	4	5	6	7	8	9	10	11	12
IgG1	A	0.722	0.788	0.099	0.899	0.787	0.085	0.917	0.218	0.850	0.692	0.810	0.593
IgG2a	B	0.931	0.663	0.091	0.235	0.419	0.931	0.074	1.075	0.079	0.859	0.073	0.069
IgG2b	C	0.665	0.460	0.075	0.062	0.371	0.063	0.072	0.073	0.065	0.456	0.062	0.064
IgG3	D	0.209	0.134	0.094	0.088	0.108	0.085	0.085	0.088	0.083	0.165	0.084	0.089
IgM	E	0.158	0.739	0.853	0.089	0.069	0.056	0.053	0.057	0.054	0.186	0.061	0.069
IgA	F	0.302	0.409	0.116	0.106	0.181	0.060	0.085	0.095	0.089	0.117	0.085	0.076
Kappa	G	0.941	0.873	0.710	0.817	0.777	0.618	0.767	0.753	0.781	0.868	0.490	0.564
Lamda	H	0.249	0.209	0.107	0.098	0.109	0.085	0.090	0.09	0.084	0.154	0.255	0.084

The data show an excellent correlation between the ELISA Mouse-Monoclonal Isotyping Kit (lot #: 117753) and BAW's Iso-Gold Kit. In addition to the correct interpretation of the Isotype, the level of contaminating antibody in each monoclonal can be accurately determined with the IsoGold Kit; impurities in the form of contaminating isotypes and subclasses correlate well the ELISA. Thus the rapid test has the added feature of determining the purity of the monoclonal being tested.

