

COMPLEMENT ANTIBODIES AND PROTEINS FROM CEDARLANE

# Complement Antibodies and Proteins

INTERNATIONAL VERSION

**CEDARLANE**<sup>®</sup> 

[www.cedarlanelabs.com](http://www.cedarlanelabs.com)

# Complement Antibodies and Proteins

For over 50 years, Cedarlane has provided complement related products to the life science research and diagnostic communities. Cedarlane offers numerous formats of reagent complement as well as an extensive range of recombinant proteins and antibodies. We have antibodies to complement components, regulators and receptors which are offered in a variety of formats including purified and conjugates to biotin, FITC, PE, APC and Horseradish Peroxidase.

## Complement Component C3

Complement component C3 (C3) is an immune system protein that plays a central role in the classical and alternative complement activation pathways. In the classical complement pathway, activation is seen to be antibody dependent. Downstream of this activation, C3 is cleaved to C3a and C3b by a C3 convertase (C4b2a). In contrast to the classical pathway, C3 is critical for initiation of the alternative complement pathway. C3b that arises from spontaneous hydrolysis of C3 binds microbial surfaces and remains in an active form. Bound C3b binds Factor B and makes it susceptible to cleavage by Factor D. The resulting C3 convertase (C3bBb complex) further enhances processing of C3 to C3a and C3b. C3a is released from the surface and functions as a peptide mediator of inflammation (anaphylatoxin). C3b becomes an integral part of the C5 convertases in both the classical and alternative pathways. These lead to the processing of C5 to C5a and C5b and ultimately to the generation of the membrane attack complex (MAC).

### Antibodies

Specificity	Clone	Isotype	Species Reactivity	Application
C3	RmC11H9	Rat IgG2a	Mouse	IF, C, WB, E
C3a/C3a(desArg)/C3	K13/16	Mouse IgG1 K	Human	FN, IP, E, WB
C3/C3b/iC3b	6C9	Mouse IgG1	Human/Mouse	F, E
C3/C3b/iC3b	10C7	Mouse IgG1	Human/Mouse	F, E
C3/C3b/iC3b	7C12	Mouse IgG1	Human/Mouse	WB, F, E
C3/C3b/iC3b/C3d	1H8	Mouse IgG2a	Human/Mouse	WB, F, E

### ELISA

Human C3a/C3a desArg	96 wells	<b>CL76160K</b>	Human	E
----------------------	----------	-----------------	-------	---

## Complement Factor B

Complement factor B is an immune system protein that plays a major role in the alternative complement pathway. Factor B binds C3b in a Mg<sup>2+</sup> dependent manner at the antigenic surface. This interaction exposes a site on factor B that serves as a substrate for the serum protease factor D. Factor D cleaves factor B bound to C3b, releasing a small fragment (Ba) and generating C3bBb. The resulting C3bBb complex has C3 convertase activity analogous to the C4b2a complex of the classical pathway. The C3 convertase enhances the processing of C3 leading to a marked increase in the number of C3b molecules deposited on the antigenic surface. This leads to the generation of the C3bBb3b complex, which exhibits C5 convertase activity, analogous to the C4b2a3b complex in the classical pathway. This is the convergence point of both the classical and alternative complement pathways.

### Antibodies

Specificity	Clone	Isotype	Species Reactivity	Application
Factor Ba (Neo-Epitope)	D22/3	Mouse IgG2b K	Human	F, E, WB
Factor B/Bb	M13/12	Mouse IgG1 K	Human	IP, E, WB

## Complement Antibodies

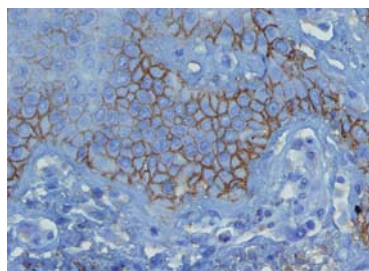
Specificity	Format	Clone	Isotype	Species Reactivity	Application	Size	Cat #
Activated C1s	Purified	M241	Mouse IgG2a	Human	F, C, P, E, WB, IP	100 µg	<b>CL7318AP</b>
Activated C3	Purified	bH6	Mouse IgG2a	Human	C, P, E	100 µg	<b>CL7321AP</b>
C1 Inhibitor	Purified		Goat IgG	Human	IP	5 mg	<b>CL20023A</b>
C1 Inhibitor	Aff. Purified		Goat IgG	Human	E, IP	0.5 mg	<b>CL20023AP</b>
C1 Inhibitor	HRPO		Goat IgG	Human	E	0.2 mg	<b>CL20023HP</b>
C1 Inhibitor	Aff. Purified		Sheep IgG	Human	E	1 mg	<b>CL7340AP</b>
C1q	Purified		Rabbit Ig	Rat	C, E, IP	100 µg	<b>CL7333AP</b>
C1q	Purified	Polyclonal	Rabbit IgG	Human	F, WB, E	200 µg	<b>CL7633AP</b>
C1q	Biotin	Polyclonal	Rabbit IgG	Human	F, WB, E	100 µg	<b>CL7633B</b>
C1q	HRPO	Polyclonal	Rabbit IgG	Human	WB, E	100 µg	<b>CL7633HP</b>
C1q	Purified	MhC5B9	Mouse IgG1	Human	IF, C, WB, E	250 µg	<b>CL7611AP</b>
C1q	Biotin	MhC5B9	Mouse IgG1	Human	IF	100 µg	<b>CL7611B</b>
C1q	FITC	MhC5B9	Mouse IgG1	Human	IF	100 µg	<b>CL7611F</b>
C1q	PE	MhC5B9	Mouse IgG1	Human	IF	50 µg	<b>CL7611PE</b>
C1q	Aff. Purified		Goat IgG	Human	E	1 mg	<b>CL7341AP</b>
C1q	Purified	RmC7H8	Rat IgG1	Mouse	IF, C, WB, E	250 µg	<b>CL7501AP</b>
C1q	Biotin	RmC7H8	Rat IgG1	Mouse	IF, E, WB	100 µg	<b>CL7501B</b>
C1q	FITC	RmC7H8	Rat IgG1	Mouse	IF	100 µg	<b>CL7501F</b>
C1q	PE	RmC7H8	Rat IgG1	Mouse	IF, E, WB, F	50 µg	<b>CL7501PE</b>
C1q, Recombinant	Protein			Human		200 µg	<b>CLPRO554</b>
C1q, Recombinant	Protein			Human		1 mg	<b>CLPRO554-2</b>
C1qBP (C1q Binding Protein)	Protein			Human		5 µg	<b>CLPRO636</b>
C1qBP (C1q Binding Protein)	Protein			Human		25 µg	<b>CLPRO636-2</b>
C1s	Purified	M81	Mouse IgG1	Human	F, C, P, E, WB, IP	100 µg	<b>CL7317AP</b>
C3	Purified		Rabbit Ig	Rat	E, WB	100 µg	<b>CL7334AP</b>
C3	Purified	RmC11H9	Rat IgG2a	Mouse	IF, C, WB, E	250 µg	<b>CL7503AP</b>
C3	Purified	RmC11H9	Rat IgG2a	Mouse	IF, E, WB, F, IHC, C	500 µg	<b>CL7503AP-2</b>
C3	Biotin	RmC11H9	Rat IgG2a	Mouse	IF, E, WB, F, IHC, C	100 µg	<b>CL7503B</b>
C3	FITC	RmC11H9	Rat IgG2a	Mouse	IF	100 µg	<b>CL7503F</b>
C3	No Azide	RmC11H9	Rat IgG2a	Mouse	IF, C, WB, E	1 mg	<b>CL7503NA</b>
C3	PE	RmC11H9	Rat IgG2a	Mouse	IF, E, WB, F, IHC, C	50 µg	<b>CL7503PE</b>
C3/C3a	Purified	474	Mouse IgG1	Human	E, WB	100 µg	<b>CL7305AP</b>
C3/C3a	Purified	2898	Mouse IgG1	Human	E, WB	100 µg	<b>CL7307AP</b>
C3a/C3a desArg	Purified	2991	Mouse IgG1	Human	E, WB	100 µg	<b>CL7306AP</b>
C3a/C3a desArg	ELISA Kit			Human	E	96 well	<b>CL76160K</b>
C3a/C3a(desArg)/C3	Purified	K13/16	Mouse IgG1 K	Human	FN, IP, E, WB	200 µg	<b>CL7623AP</b>
C3a/C3a(desArg)/C3	Biotin	K13/16	Mouse IgG1 K	Human	FN, IP, E, WB	100 µg	<b>CL7623B</b>
C3a/C3a(desArg)/C3	FITC	K13/16	Mouse IgG1 K	Human	WB	100 µg	<b>CL7623F</b>
C3a/C3a(desArg)/C3	PE	K13/16	Mouse IgG1 K	Human	WB	50 µg	<b>CL7623PE</b>
C3/C3b	Purified	2B10B9B2	Mouse IgM	Rat	E, WB	100 µg	<b>CL7330AP</b>

**Legend for Applications:** AC=Affinity Chromatography AGG=Agglutination C=Cryostat Sections CT=Cytotoxicity Assay D=Depletion E=ELISA EC=ELISA (Capture) ED=ELISA (Detection) F=Flow Cytometry FN=Functional Assay IC=Immunocytochemistry ID=Immunodiffusion IF=Immunofluorescence IP=Immunoprecipitation IV=In vivo Assay N=Neutralization P=Paraffin-Embedded Sections R=RIA WB=Western Blotting

## Complement Antibodies (continued)

Specificity	Format	Clone	Isotype	Species Reactivity	Application	Size	Cat #
C3/C3b/iC3b	Purified	6C9	Mouse IgG1	Human/Mouse	F, E	250 µg	<b>CL7631AP</b>
C3/C3b/iC3b	Biotin	6C9	Mouse IgG1	Human/Mouse	F, E	100 µg	<b>CL7631B</b>
C3/C3b/iC3b	FITC	6C9	Mouse IgG1	Human/Mouse	F, E	100 µg	<b>CL7631F</b>
C3/C3b/iC3b	PE	6C9	Mouse IgG1	Human/Mouse	F, E	50 µg	<b>CL7631PE</b>
C3/C3b/iC3b	APC	6C9	Mouse IgG1	Human/Mouse	F	100 µg	<b>CL7631APC</b>
C3/C3b/iC3b	Purified	10C7	Mouse IgG1	Human/Mouse	F, E	250 µg	<b>CL7632AP</b>
C3/C3b/iC3b	Biotin	10C7	Mouse IgG1	Human/Mouse	F, E	100 µg	<b>CL7632B</b>
C3/C3b/iC3b	FITC	10C7	Mouse IgG1	Human/Mouse	F, E	100 µg	<b>CL7632F</b>
C3/C3b/iC3b	PE	10C7	Mouse IgG1	Human/Mouse	F, E	50 µg	<b>CL7632PE</b>
C3/C3b/iC3b	Purified	7C12	Mouse IgG1	Human/Mouse	WB, F, E	250 µg	<b>CL7636AP</b>
C3/C3b/iC3b	Biotin	7C12	Mouse IgG1	Human/Mouse	WB, F, E	100 µg	<b>CL7636B</b>
C3/C3b/iC3b	FITC	7C12	Mouse IgG1	Human/Mouse	WB, F	100 µg	<b>CL7636F</b>
C3/C3b/iC3b	PE	7C12	Mouse IgG1	Human/Mouse	WB, F	50 µg	<b>CL7636PE</b>
C3/C3b/iC3b/C3d	Purified	1H8	Mouse IgG2a	Human/Mouse	WB, F, E	250 µg	<b>CL7637AP</b>
C3/C3b/iC3b/C3d	Biotin	1H8	Mouse IgG2a	Human/Mouse	WB, F, E	100 µg	<b>CL7637B</b>
C3/C3b/iC3b/C3d	FITC	1H8	Mouse IgG2a	Human/Mouse	WB, F	100 µg	<b>CL7637F</b>
C3/C3b/iC3b/C3d	PE	1H8	Mouse IgG2a	Human/Mouse	WB, F	50 µg	<b>CL7637PE</b>
C3a receptor	Purified	74	Mouse IgG1	Rat	F, C	250 µg	<b>CL031AP</b>
C3a receptor	Biotin	74	Mouse IgG1	Rat	F, C	100 µg	<b>CL031B</b>
C3a receptor	FITC	74	Mouse IgG1	Rat	F, C	100 µg	<b>CL031F</b>
C3a receptor	PE	74	Mouse IgG1	Rat	F, C	50 µg	<b>CL031PE</b>
C3aR	Purified	17	Mouse IgG2b	Human	F, C	100 µg	<b>CL7322AP</b>
C3c	Purified	4	Rat IgG2a	Human	IP	100 µg	<b>CL7323AP</b>
C3c, Recombnant	Protein			Human		200 µg	<b>CLPRO555</b>
C3c, Recombnant	Protein			Human		1 mg	<b>CLPRO555-2</b>
C3d	Purified-Concentrated	E28-P	Rabbit IgG	Human	C, P	0.5 mL	<b>CL2904AP-0.5</b>
C3d	Purified-Concentrated	E28-P	Rabbit IgG	Human	C, P	1 mL	<b>CL2904AP-1</b>
C3d	Ready to Use	E28-P	Rabbit IgG	Human	C, P	7 mL	<b>CL2904AP-7</b>
C3d	Ready to Use	E28-P	Rabbit IgG	Human	C, P	15 mL	<b>CL2904AP-15</b>
C4	Purified		Rabbit Ig	Rat	E, IP	100 µg	<b>CL7335AP</b>

**Legend for Applications:** AC=Affinity Chromatography AGG=Agglutination C=Cryostat Sections CT=Cytotoxicity Assay D=Depletion E=ELISA EC=ELISA (Capture) ED=ELISA (Detection) F=Flow Cytometry FN=Functional Assay IC=Immunocytochemistry ID=Immunodiffusion IF=Immunofluorescence IP=Immunoprecipitation IV=In vivo Assay N=Neutralization P=Paraffin-Embedded Sections R=RIA WB=Western Blotting



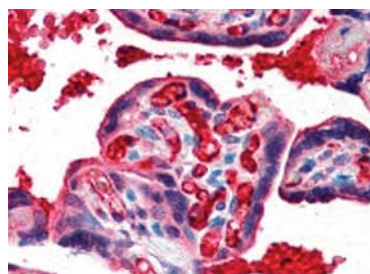
### Anti-Human C3d (Purified)

Formalin-fixed, paraffin-embedded human skin biopsy (4 µm) from lesion of the early pemphigus vulgaris (without blister formation), stained with anti-C3d complement (CL2904AP) antibody shows strong positive intraepidermal intercellular immunostaining.

## Complement Antibodies (continued)

Specificity	Format	Clone	Isotype	Species Reactivity	Application	Size	Cat #
C4	Purified	RmC16D2	Rat IgG2a	Mouse	IF, C, WB, E	250 µg	<b>CL7504AP</b>
C4	Purified	RmC16D2	Rat IgG2a	Mouse	IF, C, WB, E	500 µg	<b>CL7504AP-2</b>
C4	Biotin	RmC16D2	Rat IgG2a	Mouse	IF, E, WB, F, IHC, C	100 µg	<b>CL7504B</b>
C4	FITC	RmC16D2	Rat IgG2a	Mouse	IF	100 µg	<b>CL7504F</b>
C4	No Azide	RmC16D2	Rat IgG2a	Mouse	IF, C, WB, E	1 mg	<b>CL7504NA</b>
C4b	Purified		Chicken IgY	Human	E, WB, P, F	500 µg	<b>CL2154AP</b>
C4c, Recombinant	Protein			Human		200 µg	<b>CLPRO556</b>
C4c, Recombinant	Protein			Human		1 mg	<b>CLPRO556-2</b>
C4d	Purified-Concentrated	A24-T	Rabbit IgG	Human	C, P,	0.5 mL	<b>CL2899AP-0.5</b>
C4d	Purified-Concentrated	A24-T	Rabbit IgG	Human	C, P	1 mL	<b>CL2899AP-1</b>
C4d	Ready to Use	A24-T	Rabbit IgG	Human	C, P	7 mL	<b>CL2899AP-7</b>
C4d	Ready to Use	A24-T	Rabbit IgG	Human	C, P	15 mL	<b>CL2899AP-15</b>
C4d	Purified	12D11	Mouse IgG1	Human	E, WB, C	100 µg	<b>CL7324AP</b>
C4d	Purified	7H4	Mouse IgG1	Human	E, WB, C	100 µg	<b>CL7325AP</b>
C4d	Purified	C3F.7	Mouse IgG1	Human	C	100 µg	<b>CL7350AP</b>
C5	Aff. Purified		Goat IgG	Human	E	0.5 mg	<b>CL7342AP</b>
C5	Aff. Purified		Sheep IgG	Human	E	1 mg	<b>CL7343AP</b>
C5/C5a	Purified	561	Mouse IgG2a	Human	E, IP, WB	100 µg	<b>CL7308AP</b>
C5/C5a	Purified	557	Mouse IgG2a	Human	E	100 µg	<b>CL7309AP</b>
C5/C5b	Purified	568	Mouse IgG2a	Human	E, WB	100 µg	<b>CL7312AP</b>
C5a	Purified		Rabbit IgG	Human	E	200 µg	<b>CL7635AP</b>
C5a	Biotin		Rabbit IgG	Human	E	100 µg	<b>CL7635B</b>
C5a, Recombinant	Protein			Mouse		50 µg	<b>CL7336R</b>

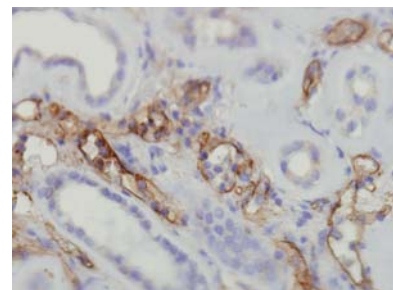
**Legend for Applications:** **AC**=Affinity Chromatography **AGG**=Agglutination **C**=Cryostat Sections **CT**=Cytotoxicity Assay **D**=Depletion **E**=ELISA **EC**=ELISA (Capture) **ED**=ELISA (Detection) **F**=Flow Cytometry **FN**=Functional Assay **IC**=Immunocytochemistry **ID**=Immunodiffusion **IF**=Immunofluorescence **IP**=Immunoprecipitation **IV**=*In vivo* Assay **N**=Neutralization **P**=Paraffin-Embedded Sections **R**=RIA **WB**=Western Blotting

**Anti-Human C4b (Purified)**

IHC staining of formalin-fixed, paraffin-embedded human tissues (placenta) using Purified Anti-Human Complement Component C4b (CL2154AP) at a dilution of 20 µg/mL.

**Anti-Human C4d (Purified)**

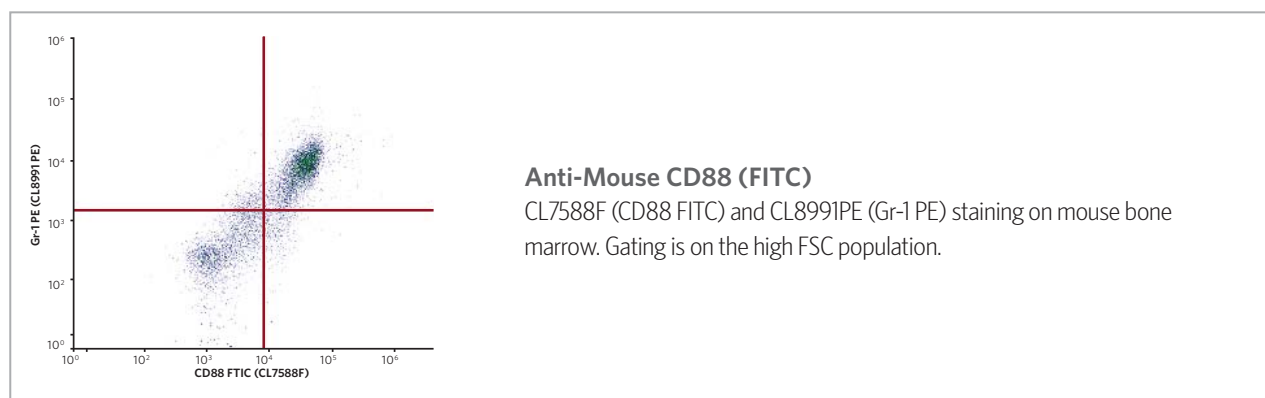
Formalin-fixed, paraffin-embedded human transplanted kidney stained with anti-C4d complement (CL2899AP-1) antibody shows diffuse strong positive immunostaining of peritubular and glomerular capillaries.



## Complement Antibodies (continued)

Specificity	Format	Clone	Isotype	Species Reactivity	Application	Size	Cat #
C5a, Recombinant	Protein			Human		50 µg	<b>CL7338R</b>
C5a desArg, Recombinant	Protein			Mouse		50 µg	<b>CL7337R</b>
C5a desArg, Recombinant	Protein			Human		50 µg	<b>CL7339R</b>
C5a/C5a desArg	Purified	2942	Mouse IgG2a	Human	E, WB	100 µg	<b>CL7310AP</b>
C5a/C5a desArg	Purified	2952	Mouse IgG1	Human	E, WB	100 µg	<b>CL7311AP</b>
C5a/C5a(desArg) (Neo-Epitope)	Purified	C17/5	Mouse IgG1 K	Human	E, WB	200 µg	<b>CL7624AP</b>
C5a/C5a(desArg) (Neo-Epitope)	Biotin	C17/5	Mouse IgG1 K	Human	E, WB	100 µg	<b>CL7624B</b>
C5a/C5a(desArg) (Neo-Epitope)	FITC	C17/5	Mouse IgG1 K	Human	WB	100 µg	<b>CL7624F</b>
C5a/C5a(desArg) (Neo-Epitope)	PE	C17/5	Mouse IgG1 K	Human	WB	50 µg	<b>CL7624PE</b>
C5a Receptor (CD88)	Purified	20/70	Rat IgG2b	Mouse	F, IF, Blocking	250 µg	<b>CL7588AP</b>
C5a Receptor (CD88)	Biotin	20/70	Rat IgG2b	Mouse	F, IF, Blocking	100 µg	<b>CL7588B</b>
C5a Receptor (CD88)	FITC	20/70	Rat IgG2b	Mouse	F, IF, Blocking	100 µg	<b>CL7588F</b>
C5a Receptor (CD88)	No Azide	20/70	Rat IgG2b	Mouse	F, IF, Blocking	1 mg	<b>CL7588NA</b>
C5a Receptor (CD88)	PE	20/70	Rat IgG2b	Mouse	F, IF, Blocking	50 µg	<b>CL7588PE</b>
C5a Receptor (CD88)	Purified	8D6	Rat IgG2a	Human	F	250 µg	<b>CL7688AP</b>
C5a Receptor (CD88)	Biotin	8D6	Rat IgG2a	Human	F	100 µg	<b>CL7688B</b>
C5a Receptor (CD88)	FITC	8D6	Rat IgG2a	Human	F	100 µg	<b>CL7688F</b>
C5a Receptor (CD88)	PE	8D6	Rat IgG2a	Human	F	50 µg	<b>CL7688PE</b>
C5aR	Purified	R63	Mouse IgG1	Rat	C, F	100 µg	<b>CL7326AP</b>
C9	Purified	X197	Mouse IgG1	Human	F, C, P, E, WB	100 µg	<b>CL7319AP</b>
C9	FITC	X197	Mouse IgG1	Human	F	100 µg	<b>CL7319F</b>
C9	Aff. Purified		Sheep IgG	Human	E	1 mg	<b>CL7344AP</b>
CD11b (Mac-1; Ly 40; CR3a)	Ascites	M1/70.15	Rat IgG2b	Mouse	F, C, P, IP, WB, FN	0.5 mL	<b>CL8941A</b>

**Legend for Applications:** **AC**=Affinity Chromatography **AGG**=Agglutination **C**=Cryostat Sections **CT**=Cytotoxicity Assay **D**=Depletion **E**=ELISA **EC**=ELISA (Capture) **ED**=ELISA (Detection) **F**=Flow Cytometry **FN**=Functional Assay **IC**=Immunocytochemistry **ID**=Immunodiffusion **IF**=Immunofluorescence **IP**=Immunoprecipitation **IV**=*In vivo* Assay **N**=Neutralization **P**=Paraffin-Embedded Sections **R**=RIA **WB**=Western Blotting

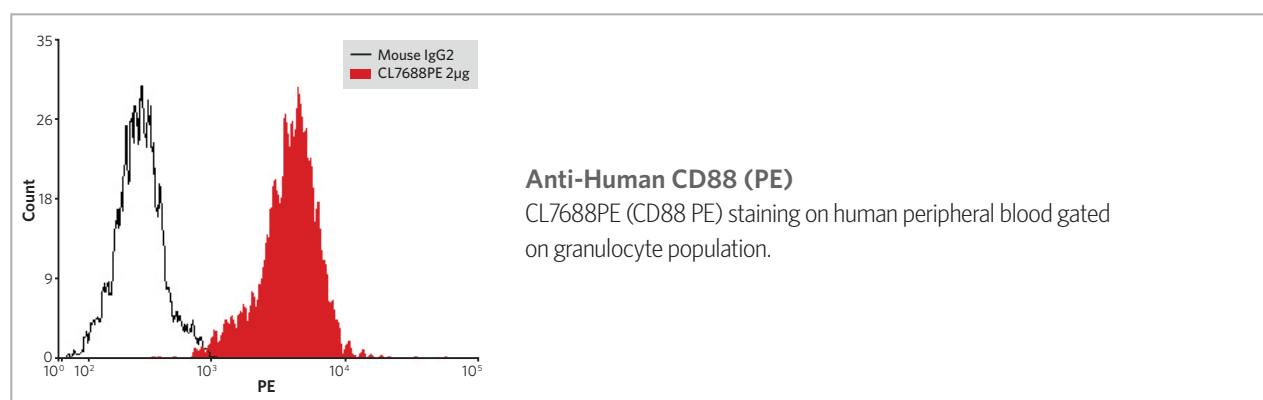




## Complement Antibodies (continued)

Specificity	Format	Clone	Isotype	Species Reactivity	Application	Size	Cat #
CD11b (Mac-1; Ly 40; CR3a)	Purified	M1/70.15	Rat IgG2b	Mouse	F, C, P, IP, WB, FN	250 µg	<b>CL8941AP</b>
CD11b (Mac-1; Ly 40; CR3a)	Biotin	M1/70.15	Rat IgG2b	Mouse	F, C, P	100 µg	<b>CL8941B</b>
CD11b (Mac-1; Ly 40; CR3a)	FITC	M1/70.15	Rat IgG2b	Mouse	F	100 µg	<b>CL8941F</b>
CD11b (Mac-1; Ly 40; CR3a)	PE	M1/70.15	Rat IgG2b	Mouse	F	50 µg	<b>CL8941PE</b>
CD11b/c (pan macrophage)	Ascites	OX-42	Mouse IgG2a	Rat	F, IP, C, P, FN	0.5 mL	<b>CL042A</b>
CD11b/c (pan macrophage)	Purified	OX-42	Mouse IgG2a	Rat	F, IP, C, P	250 µg	<b>CL042AP</b>
CD11b/c (pan macrophage)	Biotin	OX-42	Mouse IgG2a	Rat	F, C, P	100 µg	<b>CL042B</b>
CD11b/c (pan macrophage)	FITC	OX-42	Mouse IgG2a	Rat	F	100 µg	<b>CL042F</b>
CD11b/c (pan macrophage)	PE	OX-42	Mouse IgG2a	Rat	F	50 µg	<b>CL042PE</b>
CD21	Purified	21A/5	Mouse IgG1	Human	F, C	200 µg	<b>CL7613AP</b>
CD21	Biotin	21A/5	Mouse IgG1	Human	F, C	100 µg	<b>CL7613B</b>
CD21	FITC	21A/5	Mouse IgG1	Human	F, C	100 µg	<b>CL7613F</b>
CD21	PE	21A/5	Mouse IgG1	Human	F, C	50 µg	<b>CL7613PE</b>
CD21	APC	21A/5	Mouse IgG1	Human	F, C	100 µg	<b>CL7613APC</b>
CD35	Purified	To5	Mouse IgG1	Human	F, WB, C	200 µg	<b>CL7614AP</b>
CD35	Biotin	To5	Mouse IgG1	Human	F, WB, C	100 µg	<b>CL7614B</b>
CD35	FITC	To5	Mouse IgG1	Human	F, WB, C	100 µg	<b>CL7614F</b>
CD35	PE	To5	Mouse IgG1	Human	F, WB, C	50 µg	<b>CL7614PE</b>
CD35	APC	To5	Mouse IgG1	Human	F, C	100 µg	<b>CL7614APC</b>
CD46	Purified	M177	Mouse IgG1	Human	F, C, P, E, WB, IP	100 µg	<b>CL7314AP</b>
CD46	FITC	M177	Mouse IgG1	Human	F	100 µg	<b>CL7314F</b>
CD55	Purified	D17	Mouse IgG1	Human	F, WB	100 µg	<b>CL7315AP</b>
CD55	FITC	D17	Mouse IgG1	Human	F	100 µg	<b>CL7315F</b>

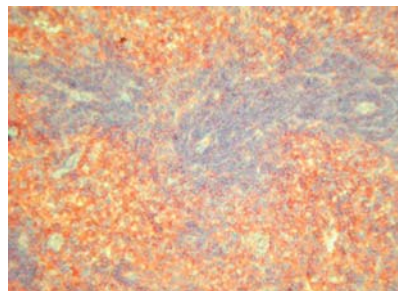
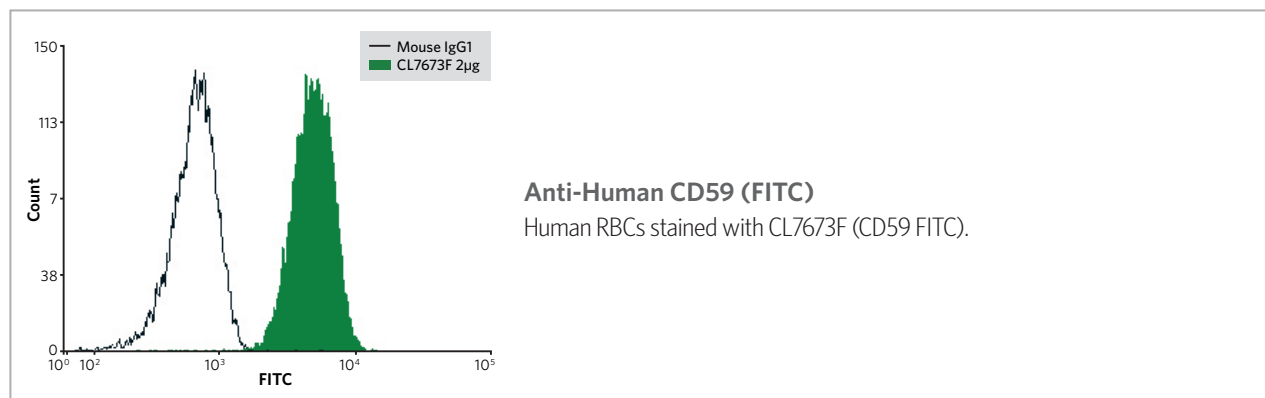
**Legend for Applications:** **AC**=Affinity Chromatography **AGG**=Agglutination **C**=Cryostat Sections **CT**=Cytotoxicity Assay **D**=Depletion **E**=ELISA **EC**=ELISA (Capture) **ED**=ELISA (Detection) **F**=Flow Cytometry **FN**=Functional Assay **IC**=Immunocytochemistry **ID**=Immunodiffusion **IF**=Immunofluorescence **IP**=Immunoprecipitation **IV**=In vivo Assay **N**=Neutralization **P**=Paraffin-Embedded Sections **R**=RIA **WB**=Western Blotting



## Complement Antibodies (continued)

Specificity	Format	Clone	Isotype	Species Reactivity	Application	Size	Cat #
CD59 (Protectin)	Purified	1F5	Mouse IgG1	Human	F	250 µg	<b>CL7673AP</b>
CD59 (Protectin)	Biotin	1F5	Mouse IgG1	Human	F	100 µg	<b>CL7673B</b>
CD59 (Protectin)	FITC	1F5	Mouse IgG1	Human	F	100 µg	<b>CL7673F</b>
CD59 (Protectin)	PE	1F5	Mouse IgG1	Human	F	50 µg	<b>CL7673PE</b>
CHIPS, C-terminus	Purified	JCC1	Mouse IgG1	Misc. CHIPS	C, F, WB	100 µg	<b>CL7331AP</b>
CHIPS, N-terminus	Purified	JNC1	Mouse IgG1	Misc. CHIPS	C, F, WB	100 µg	<b>CL7332AP</b>
Crry	Purified	5I2	Mouse IgG1	Rat	F, C	250 µg	<b>CL064AP</b>
Crry	Biotin	5I2	Mouse IgG1	Rat	F, C	100 µg	<b>CL064B</b>
Crry	FITC	5I2	Mouse IgG1	Rat	F, C	100 µg	<b>CL064F</b>
DAF (CD55)	Purified	RIKO-3	Hamster IgG (Armenian)	Mouse	F, E, WB	250 µg	<b>CL7540AP</b>
DAF (CD55)	Biotin	RIKO-3	Hamster IgG (Armenian)	Mouse	F, E, WB	100 µg	<b>CL7540B</b>
DAF (CD55)	FITC	RIKO-3	Hamster IgG (Armenian)	Mouse	F, E, WB	100 µg	<b>CL7540F</b>
DAF (CD55)	PE	RIKO-3	Hamster IgG (Armenian)	Mouse	F, E, WB	50 µg	<b>CL7540PE</b>
Factor B (C3 Proactivator)	Aff. Purified		Goat IgG	Human	E	1 mg	<b>CL7345AP</b>
Factor B (C3 Proactivator)	Aff. Purified		Sheep IgG	Human	E	1 mg	<b>CL7346AP</b>

**Legend for Applications:** **AC**=Affinity Chromatography **AGG**=Agglutination **C**=Cryostat Sections **CT**=Cytotoxicity Assay **D**=Depletion **E**=ELISA **EC**=ELISA (Capture) **ED**=ELISA (Detection) **F**=Flow Cytometry **FN**=Functional Assay **IC**=Immunocytochemistry **ID**=Immunodiffusion **IF**=Immunofluorescence **IP**=Immunoprecipitation **IV**=In vivo Assay **N**=Neutralization **P**=Paraffin-Embedded Sections **R**=RIA **WB**=Western Blotting

**Anti-Rat Crry (Purified)**

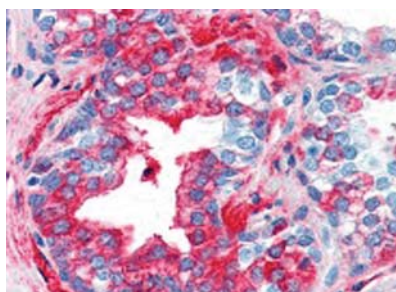
CL064AP [Anti-Rat Crry, Purified (Clone 5I2)] staining of rat spleen (Frozen section) at a concentration of 0.1 µg/mL (Magnification approximately 150X).



## Complement Antibodies (continued)

Specificity	Format	Clone	Isotype	Species Reactivity	Application	Size	Cat #
Factor Ba (Neo-Epitope)	Purified	D22/3	Mouse IgG2b K	Human	F, E, WB	200 µg	<b>CL7618AP</b>
Factor Ba (Neo-Epitope)	Biotin	D22/3	Mouse IgG2b K	Human	F, E, WB	100 µg	<b>CL7618B</b>
Factor Ba (Neo-Epitope)	FITC	D22/3	Mouse IgG2b K	Human	F, WB	100 µg	<b>CL7618F</b>
Factor Ba (Neo-Epitope)	PE	D22/3	Mouse IgG2b K	Human	F, WB	50 µg	<b>CL7618PE</b>
Factor B/Bb	Purified	M13/12	Mouse IgG1 K	Human	IP, E, WB	200 µg	<b>CL7619AP</b>
Factor B/Bb	Biotin	M13/12	Mouse IgG1 K	Human	IP, E, WB	100 µg	<b>CL7619B</b>
Factor B/Bb	FITC	M13/12	Mouse IgG1 K	Human	WB	100 µg	<b>CL7619F</b>
Factor B/Bb	PE	M13/12	Mouse IgG1 K	Human	WB	50 µg	<b>CL7619PE</b>
Factor H	Purified	OX-24	Mouse IgG1	Human	F, E, IP, WB	250 µg	<b>CL7672AP</b>
Factor H	Biotin	OX-24	Mouse IgG1	Human	E	100 µg	<b>CL7672B</b>
Factor H	FITC	OX-24	Mouse IgG1	Human	E	100 µg	<b>CL7672F</b>
Factor I	Purified	OX-21	Mouse IgG1	Human	E	250 µg	<b>CL7671AP</b>
Factor I	Biotin	OX-21	Mouse IgG1	Human	E	100 µg	<b>CL7671B</b>
Factor I	FITC	OX-21	Mouse IgG1	Human	E	100 µg	<b>CL7671F</b>
gC1qR	Ascites	60.11	Mouse IgG1k	Human	F, WB, E	0.5 mL	<b>CL7601A</b>
gC1qR	Purified	60.11	Mouse IgG1k	Human	F, WB, E	250 µg	<b>CL7601AP</b>
gC1qR	Biotin	60.11	Mouse IgG1k	Human	F, WB, E	100 µg	<b>CL7601B</b>
gC1qR	FITC	60.11	Mouse IgG1k	Human	F, WB, E	100 µg	<b>CL7601F</b>
gC1qR	Ascites	74.5.2	Mouse IgG1k	Human	F, WB, E	0.5 mL	<b>CL7602A</b>
gC1qR	Purified	74.5.2	Mouse IgG1k	Human	F, WB, E	250 µg	<b>CL7602AP</b>
gC1qR	PE	74.5.2	Mouse IgG1k	Human	F, WB, E	50 µg	<b>CL7602PE</b>
MBL	Purified	3E7	Mouse IgG1	Human	F, C, WB, E	100 µg	<b>CL7304AP</b>
MBL	FITC	3E7	Mouse IgG1	Human	F, C, E	100 µg	<b>CL7304F</b>
MBL	Purified	D8.18	Mouse IgG1	Human	F, WB, E	100 µg	<b>CL7313AP</b>
MBL	Biotin	D8.18	Mouse IgG1	Human	F, WB, E	50 µg	<b>CL7313B</b>
MBL-A	Purified	8G6	Rat IgG	Mouse	WB, C, E	100 µg	<b>CL7300AP</b>
MBL-A	Purified	2B4	Rat IgG	Mouse	WB, E	100 µg	<b>CL7301AP</b>
MBL-C	Purified	16A8	Rat IgG2a	Mouse	WB, E	100 µg	<b>CL7302AP</b>

**Legend for Applications:** AC=Affinity Chromatography AGG=Agglutination C=Cryostat Sections CT=Cytotoxicity Assay D=Depletion E=ELISA EC=ELISA (Capture) ED=ELISA (Detection) F=Flow Cytometry FN=Functional Assay IC=Immunocytochemistry ID=Immunodiffusion IF=Immunofluorescence IP=Immunoprecipitation IV=*In vivo* Assay N=Neutralization P=Paraffin-Embedded Sections R=RIA WB=Western Blotting

**Anti-Human Factor H (Purified)**

IHC staining of formalin-fixed, paraffin-embedded human tissues (prostate) using Purified Anti-Human Factor H (CL7672AP) at a dilution of 20 µg/mL.

## Complement Antibodies (continued)

Specificity	Format	Clone	Isotype	Species Reactivity	Application	Size	Cat #
MBL-C	Purified	14D12	Rat IgG2a	Mouse	WB, C, E	100 µg	<b>CL7303AP</b>
SP-D	Purified	IIIH3	Mouse IgG1	Rat	E, P, WB	100 µg	<b>CL7327AP</b>
SP-D	Purified	VIF9	Mouse IgG1	Rat	E, P, WB	100 µg	<b>CL7328AP</b>
SP-D	Purified	IVG8	Mouse IgG1	Rat	E, P, WB	100 µg	<b>CL7329AP</b>

**Legend for Applications:** **AC**=Affinity Chromatography **AGG**=Agglutination **C**=Cryostat Sections **CT**=Cytotoxicity Assay **D**=Depletion **E**=ELISA **EC**=ELISA (Capture) **ED**=ELISA (Detection) **F**=Flow Cytometry **FN**=Functional Assay **IC**=Immunocytochemistry **ID**=Immunodiffusion **IF**=Immunofluorescence **IP**=Immunoprecipitation **IV**=In vivo Assay **N**=Neutralization **P**=Paraffin-Embedded Sections **R**=RIA **WB**=Western Blotting

## Complement Proteins

Description	Species Reactivity	Format	Size	Cat #
C1q	Human	Protein	200 µg	<b>CLPRO554</b>
C1q	Human	Protein	1 mg	<b>CLPRO554-2</b>
C1qBP (C1q Binding Protein)	Human	Protein	5 µg	<b>CLPRO636</b>
C1qBP (C1q Binding Protein)	Human	Protein	25 µg	<b>CLPRO636-2</b>
C3c	Human	Protein	200 µg	<b>CLPRO555</b>
C3c	Human	Protein	1 mg	<b>CLPRO555-2</b>
C4c	Human	Protein	200 µg	<b>CLPRO556</b>
C4c	Human	Protein	1 mg	<b>CLPRO556-2</b>
C5a desArg, Recombinant	Mouse	Protein	50 µg	<b>CL7337R</b>
C5a desArg, Recombinant	Human	Protein	50 µg	<b>CL7339R</b>
C5a, Recombinant	Mouse	Protein	50 µg	<b>CL7336R</b>
C5a, Recombinant	Human	Protein	50 µg	<b>CL7338R</b>



For more information, please contact:

**CEDARLANE**<sup>®</sup>   
[www.cedarlanelabs.com](http://www.cedarlanelabs.com)

**In Canada**

4410 Paletta Court,  
Burlington, ON L7L 5R2

Toll Free: 1-800-268-5058

T: 289-288-0001 | F: 289-288-0020

**In the USA**

1210 Turrentine Street,  
Burlington, NC 27215

Toll Free: 1-800-721-1644

T: 336-513-5135 | F: 336-513-5138