

S-Tag Epitope Tag

An epitope of residues (KETAAAKFERQHMS) from a truncated form of the S-peptide from pancreatic ribonuclease A.

Catalog#	Product	Host	Clonality	Application	Conjugate
NB600-529	S-Tag Epitope Tag Antibody	Goat	Polyclonal	ELISA, ICC, WB	
NB600-521	S-Tag Epitope Tag Antibody	Rabbit	Polyclonal	ELISA, ICC, WB	
NB110-40658	S-Tag Epitope Tag Antibody	Goat	Polyclonal	IP	Agarose Immobilized
NB600-509	S-Tag Epitope Tag Antibody	Goat	Polyclonal	ICC	FITC
NB600-512	S-Tag Epitope Tag Antibody	Rabbit	Polyclonal	ELISA, ICC, WB	HRP

VP16 Epitope Tag

An epitope of residues 464-476 (PYGALDMADFEFE) from the herpes simplex virus VP16 protein.

Catalog#	Product	Host	Clonality	Application	Conjugate
NB600-950	VP16 Epitope Tag Antibody	Rabbit	Polyclonal	IP, WB	

T7 Epitope Tag

An epitope of residues (MASMTGGQQMG) from the T7 major capsid protein of the T7 phage.

Catalog#	Product	Host	Clonality	Application	Conjugate
NB600-371	T7 Epitope Tag Antibody	Goat	Polyclonal	ELISA, ICC, IHC, IP, WB	
NB600-372	T7 Epitope Tag Antibody	Rabbit	Polyclonal	ELISA, ICC, IHC, WB	
NB600-373	T7 Epitope Tag Antibody	Chicken	Polyclonal	ELISA, ICC, WB	
NB600-378	T7 Epitope Tag Antibody	Goat	Polyclonal	IP	Agarose Immobilized
NB600-376	T7 Epitope Tag Antibody	Goat	Polyclonal	ICC	FITC
NB600-377	T7 Epitope Tag Antibody	Goat	Polyclonal	ELISA, ICC, IHC, WB	HRP

* These products are also available in multiple conjugated formats. Please visit www.novusbio.com for details.

VSV-G Epitope Tag

An epitope of residues 501-511 (YTDIEMNRLGK) from the vesicular stomatitis Indiana virus VSV-G glycoprotein.

Catalog#	Product	Host	Clonality	Application	Conjugate
NB100-2485	VSV-G Epitope Tag Antibody	Rabbit	Polyclonal	ELISA, ICC, WB	
NB100-2484	VSV-G Epitope Tag Antibody	Goat	Polyclonal	ELISA, ICC, WB	
NB600-436	VSV-G Epitope Tag Antibody	Goat	Polyclonal	IP	Agarose Immobilized
NB100-63044	VSV-G Epitope Tag Antibody	Rabbit	Polyclonal	ELISA, IF	Biotin
NB100-2487	VSV-G Epitope Tag Antibody	Goat	Polyclonal	ICC	FITC
NB100-2486	VSV-G Epitope Tag Antibody	Goat	Polyclonal	ELISA, ICC, WB	HRP

* These products are also available in multiple conjugated formats. Please visit www.novusbio.com for details.



Novus' Quality Guarantee

We stand behind our products 100%. If you cannot get a product to work in an application or species stated on our datasheet, our technical service team will troubleshoot with you to get it to work. If a product still does not work after troubleshooting, you can receive a free of charge replacement product or a full refund. Novus' Quality Guarantee covers 100% of the products we carry, including those that we distribute for Abnova. No hassles, no nonsense. It is that simple!

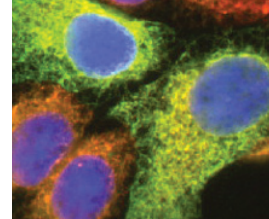
+ Innovator's Reward™

Our Innovator's Reward™ program is designed to support your innovative research with minimal financial risk to you. Should you decide to use one of our products in an application or species for which it has not been tested, Novus will provide you a 50% refund on the purchased product as well as a 50% discount on a future product of equal or lesser value. Simply email innovators@novusbio.com to apply for your award. We will send you a form for you to submit a summary of your research and report your experimental results, after which your award will be given. Your innovation can help us to accelerate bioscience research. After all, we're making your success our goal.

= 100% Support and Peace of Mind

We also offer a full line of His- and GST-epitope tagged recombinant control proteins that may be detected by our tag specific antibodies.

www.novusbio.com/product-type/peptides-and-proteins



EPITOPE TAGS

Epitope tags are artificial epitopes, also known as antigenic determinants, which may be engineered into a protein sequence by placing the epitope sequence within the same open reading frame of the gene sequence. Epitope tags are generally composed of 10-15 amino acids and are usually engineered onto either the N- or C- terminus in order to minimize tertiary structure disruptions that may alter protein function.

Epitope tagging is a powerful tool for the detection and purification of expressed proteins, and Novus Biologicals offers a wide range of epitope tag specific antibodies for a variety of immunological applications. Learn more at www.novusbio.com/research-areas/epitope-tags.html

6-Histidine Epitope Tag

A polyhistidine-tag consisting of at least six histidine (His) residues. This tag binds to metal matrices.

Catalog#	Product	Host	Clonality	Application	Conjugate
NBP1-41288	6-Histidine Epitope Tag (2A8) Antibody	Mouse	Monoclonal	ELISA, IF, IP, WB	
NBP1-42781	6-Histidine Epitope Tag (33D10.D2) Antibody	Mouse	Monoclonal	ELISA, WB	*
NB100-64768	6-Histidine Epitope Tag (AD1.1.10) Antibody	Mouse	Monoclonal	ELISA, IHC-Fr, IP	*
NB100-72978	6-Histidine Epitope Tag (His17) Antibody	Mouse	Monoclonal	ELISA, IP, WB	
NBP1-25939	6-Histidine Epitope Tag Antibody	Goat	Polyclonal	ELISA, WB	
NB100-57403	6-Histidine Epitope Tag Antibody	Rabbit	Polyclonal	DB, ELISA, WB	
NBP1-46787	6-Histidine Epitope Tag Antibody	Sheep	Polyclonal	IHC, WB	
NB600-1257	6-Histidine Epitope Tag Antibody	Chicken	Polyclonal	ELISA, WB	FITC

* These products are also available in multiple conjugated formats. Please visit www.novusbio.com for details.

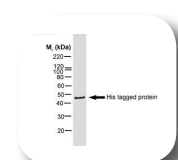
6-Histidine Epitope Tag (2A8) Antibody NBP1-41288



Western blot analysis of over-expressed His-tagged protein in 293T cell lysate.

Applications: ELISA, IF, IP, WB

6-Histidine Epitope Tag (AD1.1.10) Antibody [Biotin] NB100-63172



Western blot analysis of HIS tagged protein probed with mouse anti-histidine tag.

Applications: ELISA, WB

AU1 Epitope Tag

An epitope of residues (DTYRYI) from the bovine papilloma virus major capsid protein.

Catalog#	Product	Host	Clonality	Application	Conjugate
NB600-452	AU1 Epitope Tag Antibody	Goat	Polyclonal	ELISA, ICC, WB	
NB600-453	AU1 Epitope Tag Antibody	Rabbit	Polyclonal	ELISA, ICC, WB	
NB600-400	AU1 Epitope Tag Antibody	Goat	Polyclonal	IP	Agarose Immobilized
NB600-456	AU1 Epitope Tag Antibody	Goat	Polyclonal	ICC	FITC
NB600-457	AU1 Epitope Tag Antibody	Goat	Polyclonal	ELISA, ICC, WB	HRP

AU5 Epitope Tag

An epitope of residues (TDFYLK) from the bovine papilloma virus major capsid protein.

Catalog#	Product	Host	Clonality	Application	Conjugate
NB600-461	AU5 Epitope Tag Antibody	Goat	Polyclonal	ELISA, ICC, WB	
NB600-439	AU5 Epitope Tag Antibody	Goat	Polyclonal	IP	Agarose Immobilized
NB600-463	AU5 Epitope Tag Antibody	Goat	Polyclonal	ICC	FITC
NB600-462	AU5 Epitope Tag Antibody	Goat	Polyclonal	ELISA, ICC, WB	HRP

6-Histidine Epitope Tag (33D10.D2) Antibody NBP1-42781



Western blot analysis of N-term (lane 2) and C-term (lane 3) His-tagged recombinant proteins.

Applications: ELISA, WB

c-Myc Epitope Tag

A polypeptide protein tag of residues (EQKLISEEDL) derived from the c-Myc gene product.

Catalog #	Product	Host	Clonality	Application	Conjugate
NB600-302	c-Myc Epitope Tag (9E10) Antibody	Mouse	Monoclonal	ELISA, FACS, ICC, IF, IHC-Fr, IHC-P, IHC, IP, WB	
NB200-108	c-Myc Epitope Tag (9E11) Antibody	Mouse	Monoclonal	ChIP, ELISA, IHC-Fr, IHC-P, IP, WB	
NB600-336	c-Myc Epitope Tag Antibody	Rabbit	Polyclonal	ELISA, ICC, IF, IHC-Fr, IHC-P, IHC, IP, WB	

DYKDDDDK Epitope Tag

An epitope of residues (DYKDDDDK) that is also commonly called FLAG™ epitope tag by Sigma-Aldrich. The FLAG™ tag was the first example of a fully functional epitope tag to be published in the scientific literature, and is currently the only epitope tag to be commercially patented. FLAG™ is a registered trademark of Sigma-Aldrich Biotechnology LP and Sigma-Aldrich Co.

Catalog #	Product	Host	Clonality	Application	Conjugate
NB500-554	DYKDDDDK Epitope Tag (F-tag-01) Antibody	Mouse	Monoclonal	ICC, IP, WB	
NBP1-06712	DYKDDDDK Epitope Tag (L5) Antibody	Rat	Monoclonal	ICC, IF, IP, WB	*
NB100-64535	DYKDDDDK Epitope Tag Antibody	Sheep	Polyclonal	ELISA, IF	
PAB10340	DYKDDDDK Epitope Tag Antibody	Rabbit	Polyclonal	ELISA, ICC, IHC, IP, WB	
NB600-344	DYKDDDDK Epitope Tag Antibody	Goat	Polyclonal	ELISA, ICC, IP, WB	
NB600-343	DYKDDDDK Epitope Tag Antibody	Chicken	Polyclonal	ELISA, ICC, IHC, WB	

* These products are also available in multiple conjugated formats. Please visit www.novusbio.com for details.

E-Tag Epitope Tag

An epitope of residues 7-19 (GAPVPYDPLEPR) of human Osteocalcin.

Catalog #	Product	Host	Clonality	Application	Conjugate
NB600-519	E-Tag Epitope Tag Antibody	Rabbit	Polyclonal	ELISA, ICC, WB	
NB600-518	E-Tag Epitope Tag Antibody	Goat	Polyclonal	ELISA, ICC, WB	
NB600-831	E-Tag Epitope Tag Antibody	Goat	Polyclonal	IP	Agarose Immobilized
NB600-525	E-Tag Epitope Tag Antibody	Goat	Polyclonal	ICC	FITC
NB600-526	E-Tag Epitope Tag Antibody	Goat	Polyclonal	ELISA, ICC, WB	HRP

Glu-Glu Epitope Tag

An epitope of residues 314 -319 (EYMPME) from the middle T antigen of mouse polyomavirus.

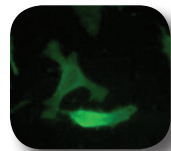
Catalog #	Product	Host	Clonality	Application	Conjugate
NB600-352	Glu-Glu Epitope Tag Antibody	Chicken	Polyclonal	ELISA, ICC, IHC, WB	
NB600-354	Glu-Glu Epitope Tag Antibody	Rabbit	Polyclonal	ELISA, ICC, IHC, WB	
NB600-353	Glu-Glu Epitope Tag Antibody	Goat	Polyclonal	ELISA, ICC, WB	
NB600-360	Glu-Glu Epitope Tag Antibody	Goat	Polyclonal	IP	Agarose Immobilized
NB600-358	Glu-Glu Epitope Tag Antibody	Goat	Polyclonal	ICC	FITC
NB600-359	Glu-Glu Epitope Tag Antibody	Goat	Polyclonal	ELISA, ICC, WB	HRP

GFP Epitope Tag

Green fluorescence protein (GFP) is a 27 kDa protein derived from the jellyfish *Aequorea victoria*, which emits green light (emission at 509 nm) when excited by blue light (excitation at 395 nm). GFP is most commonly used as a reporter for gene expression, enabling researchers to visualize and localize GFP-tagged proteins within living cells without the need for chemical staining.

Catalog #	Product	Host	Clonality	Application	Conjugate
NB600-308	GFP Epitope Tag Antibody	Rabbit	Polyclonal	ICC, IF, IHC, IP, WB	
NB600-310	GFP Epitope Tag Antibody	Rabbit	Polyclonal	ELISA, ICC, IF, WB	
NB600-303	GFP Epitope Tag Antibody	Rabbit	Polyclonal	ELISA, IP, WB	
NB100-1770	GFP Epitope Tag Antibody	Goat	Polyclonal	ELISA, IP, WB	

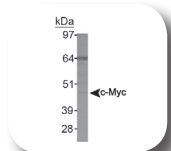
c-Myc (9E10) Epitope Tag Antibody NB600-302



HeLa cells stained for c-Myc (green) detected with DyLight Fluor 488 conjugated anti-mouse IgG secondary.

Applications: ELISA, FACS, ICC, IF, IHC-Fr, IHC-P, IP, WB

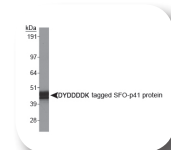
c-Myc (9E11) Epitope Tag Antibody NB200-108



Western blot analysis of c-Myc in Jurkat whole cell lysate.

Applications: ChIP, ELISA, IHC-Fr, IHC-P, IP, WB

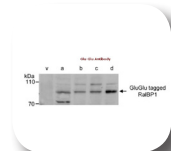
DYKDDDDK Epitope Tag (L5) Antibody NBP1-06712



Western blot analysis of DYKDDDDK tagged SFO-p41 protein.

Applications: ICC, IF, IP, WB

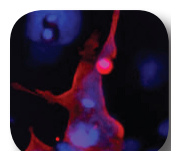
Glu-Glu Epitope Tag Antibody NB600-357



Whole cell lysate from Cos7 cells transiently transfected with control vector (v) or Glu-Glu tagged RalBP1 (alpha-d).

Applications: ELISA, ICC, WB

GFP Epitope Tag Antibody NB600-310



HEK 293 cells stained for GFP (red). Nuclei (blue) were counterstained using Hoechst 33258.

Applications: ELISA, ICC, IF, WB

GST Epitope Tag

A 233 residue epitope from Glutathione-S-Transferase (GST). This 26 kDa epitope tag is very large, relative to most other epitope tags, so its presence can affect protein folding, inhibit protein-protein interaction, and therefore prevent normal protein activity.

Catalog #	Product	Host	Clonality	Application	Conjugate
NBP1-07107	GST Epitope Tag (17B6) Antibody	Mouse	Monoclonal	IHC, WB	
NBP1-04294	GST Epitope Tag (1E5) Antibody	Mouse	Monoclonal	ELISA, WB	
NB600-446	GST Epitope Tag (3G10/1B3) Antibody	Mouse	Monoclonal	IF, IHC, IP, WB	
NB100-2196	GST Epitope Tag (6G9B9) Antibody	Mouse	Monoclonal	ELISA, ICC, IF, WB	
NBP1-19183	GST Epitope Tag (8C1-G4) Antibody	Mouse	Monoclonal	ELISA, IP, WB	
NBP1-48359	GST Epitope Tag (S-tag-05) Antibody	Mouse	Monoclonal	IP, WB	
NB600-325	GST Epitope Tag Antibody	Goat	Polyclonal	ELISA, ICC, IF, IP, WB	*
NB600-326	GST Epitope Tag Antibody	Rabbit	Polyclonal	ELISA, ICC, IHC, WB	*
NB600-327	GST Epitope Tag Antibody	Chicken	Polyclonal	ELISA, ICC, IHC, WB	

* These products are also available in multiple conjugated formats. Please visit www.novusbio.com for details.

Hemagglutinin (HA) Epitope Tag

An epitope of residues 98-106 (YPYDVPDYA) from the Hemagglutinin protein of Influenza A Virus.

Catalog #	Product	Host	Clonality	Application	Conjugate
NB100-25952	HA Epitope Tag (12CA5) Antibody	Mouse	Monoclonal	ELISA, IP, WB	
NB600-366	HA Epitope Tag Antibody	Rabbit	Polyclonal	ELISA, ICC, WB	
NB600-362	HA Epitope Tag Antibody	Goat	Polyclonal	ELISA, ICC, IF, IP, WB	
NB600-365	HA Epitope Tag Antibody	Goat	Polyclonal	ELISA, ICC, IF, IP, WB	
NB100-63165	HA Epitope Tag Antibody	Rabbit	Polyclonal	ELISA, WB	
NB600-363	HA Epitope Tag Antibody	Rabbit	Polyclonal	ChIP, ELISA, ICC, IF, IP, WB	
NB600-361	HA Epitope Tag Antibody	Chicken	Polyclonal	ELISA, ICC, IF, IP, WB	
NB600-364	HA Epitope Tag Antibody	Chicken	Polyclonal	ELISA, ICC, IF, IP, WB	
NBP1-49597	HA Epitope Tag Antibody	Rabbit	Polyclonal	ELISA, ICC, WB	
NB600-369	HA Epitope Tag Antibody	Goat	Polyclonal	IP	Agarose Immobilized
NBP1-30434	HA Epitope Tag Antibody	Rabbit	Polyclonal	IP	Agarose Immobilized
NB600-362B	HA Epitope Tag Antibody	Goat	Polyclonal	ELISA, WB	Biotin
NB600-363B	HA Epitope Tag Antibody	Rabbit	Polyclonal	ELISA, WB	Biotin
NB600-367	HA Epitope Tag Antibody	Goat	Polyclonal	ICC	FITC
NB600-363F	HA Epitope Tag Antibody	Rabbit	Polyclonal	ICC, IF	FITC
NB110-58363	HA Epitope Tag Antibody	Chicken	Polyclonal	ICC, IHC	FITC
NB600-391	HA Epitope Tag Antibody	Rabbit	Polyclonal	ELISA, ICC, IF, WB	HRP
NB600-368	HA Epitope Tag Antibody	Goat	Polyclonal	ELISA, ICC, IF, WB	HRP

KT3 Epitope Tag

An epitope of residues 701-711 (KPPTPPPEPET) from the Large T Antigen of Simian Virus 40.

Catalog #	Product	Host	Clonality	Application	Conjugate
NB110-40653	KT3 Epitope Tag Antibody	Rabbit	Polyclonal	ELISA, ICC, WB	
NB110-40656	KT3 Epitope Tag Antibody	Goat	Polyclonal	ELISA, ICC, WB	
NB600-420	KT3 Epitope Tag Antibody	Goat	Polyclonal	IP	Agarose Immobilized

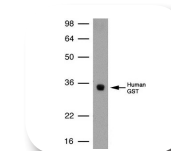
OLLAS Epitope Tag

The OLLAS (*E. coli* OmpF Linker and mouse Langerin fusion Sequence) epitope tag is a newly defined tag that is 100-fold more sensitive than other epitope tags tested. This 14 residue epitope (SGFANELGPRLMGK) consists of both sequences from the OmpF derived linker and mouse Langerin.

Catalog #	Product	Host	Clonality	Application	Conjugate
NBP1-06713	OLLAS Epitope Tag (L2) Antibody	Rat	Monoclonal	ICC, IF, IHC-Fr, IP, WB	*

* These products are also available in multiple conjugated formats. Please visit www.novusbio.com for details.

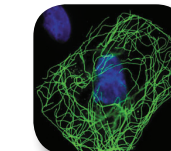
GST Epitope Tag (3G10/1B3) Antibody NB600-446



Western blot analysis of GST in HeLa whole cell lysate.

Applications: IF, IHC, IP, WB

HA Epitope Tag Antibody NB600-363



Transfected CHO cells stained for HA-tagged Tubulin.

Applications: ChIP, ELISA, ICC, IF, IP, WB

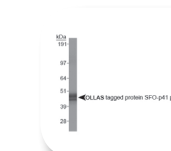
OLLAS Epitope Tag (L2) Antibody NBP1-06713



Binding sensitivity comparison of Novus' OLLAS (NBP1-06713), DYKDDDDK (NBP1-06712) and Sigma-Aldrich's FLAG-M2 antibodies.

Applications: ICC, IF, IHC-Fr, IP, WB

OLLAS Epitope Tag (L2) Antibody NBP1-06713



Western Blot on OLLAS tagged SFO-p41 protein.

Applications: ICC, IF, IHC-Fr, IP, WB